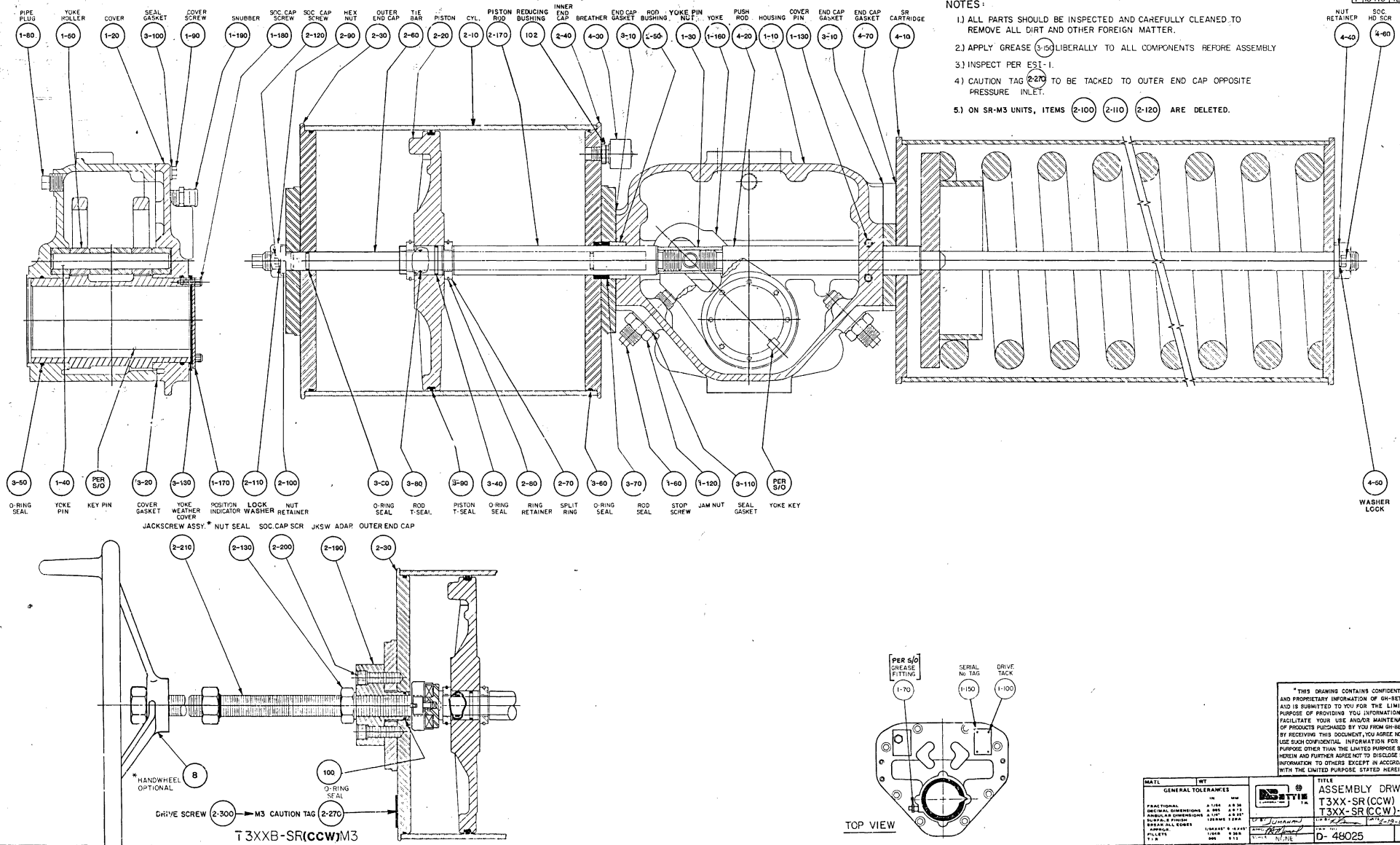


T3XXB-SR (CCW)

REVISIONS		
LT#	ECO	DATE
A	7499	09-82
B	7631	6-3-82
C	7702	3-5-83
D	7895	0-23-83
E	8035	4-9-84
F	10415	12-90



- NOTES:
- 1) ALL PARTS SHOULD BE INSPECTED AND CAREFULLY CLEANED TO REMOVE ALL DIRT AND OTHER FOREIGN MATTER.
  - 2) APPLY GREASE (3-150) LIBERALLY TO ALL COMPONENTS BEFORE ASSEMBLY.
  - 3) INSPECT PER ESI-1.
  - 4) CAUTION TAG (2-270) TO BE TACKED TO OUTER END CAP OPPOSITE PRESSURE INLET.
  - 5) ON SR-M3 UNITS, ITEMS (2-100) (2-110) (2-120) ARE DELETED.

\* THIS DRAWING CONTAINS CONFIDENTIAL AND PROPRIETARY INFORMATION OF OH-BETTS AND IS SUBMITTED TO YOU FOR THE LIMITED PURPOSE OF PROVIDING YOU INFORMATION TO FACILITATE YOUR USE AND/OR MAINTENANCE OF PRODUCTS PURCHASED BY YOU FROM OH-BETTS. BY RECEIVING THIS DOCUMENT, YOU AGREE NOT TO USE SUCH CONFIDENTIAL INFORMATION FOR ANY PURPOSE OTHER THAN THE LIMITED PURPOSE STATED HEREIN AND FURTHER AGREE NOT TO DISCLOSE SUCH INFORMATION TO OTHERS EXCEPT IN ACCORDANCE WITH THE LIMITED PURPOSE STATED HEREIN.\*

MATL	QTY	UNIT	TITLE
GENERAL TOLERANCES			 ASSEMBLY DRWG. T3XX-SR (CCW) B T3XX-SR (CCW) - M3 D-48025
FRACTIONAL			
DECIMAL DIMENSIONS			
ANGULAR DIMENSIONS			
HOLE & PIN DIA.			
HOLE & PIN DIA.			F
HOLE & PIN DIA.			

D-48025