

Mud Pumps

High-performance, robust mud pumps for onshore and offshore drilling applications.

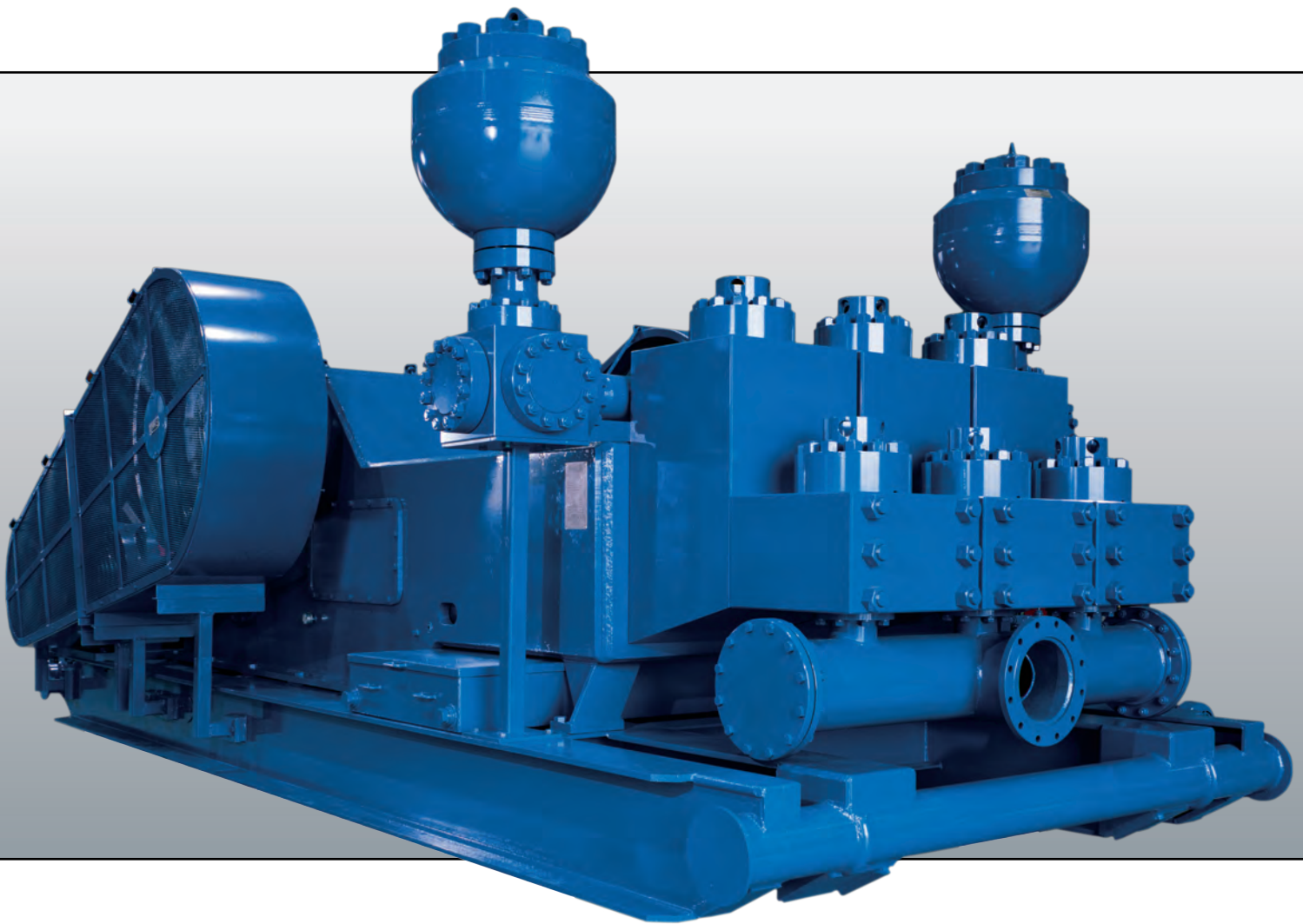


Table of Contents

LEWCO Mud Pumps.....	3
LEWCO Mud Pumps Features.....	4
LEWCO WH-Series Mud Pumps.....	6
LEWCO W-Series Mud Pumps.....	8

LEWCO Mud Pumps

Cameron manufactures high-performance, robust LEWCO™ mud pumps for onshore and offshore oil and gas drilling applications. Each mud pump features a one-piece, forged and fabricated alloy steel crankshaft for smooth operation and enhanced longevity. In addition, LEWCO mud pumps include a welded steel power frame, forged alloy steel pinions and gears and triple-redundant power end lubrication. Prior to delivery, LEWCO mud pumps are tested in our quality control facility to verify performance expectations.



For maximized drilling performance and efficiency, LEWCO mud pumps offer high discharge flow rates, impressive power-to-weight ratios and small footprints. Cameron can also furnish fluid end modules to match the customer's existing inventory. Cameron takes pride in their ability to provide integrated pump packages, including top or rear mount AC or DC electric drives, controls, manifolds, piping and accessories. Pumps are installed on a heavy-duty skid or trailer mounted for portability.

LEWCO Mud Pumps Features



One-Piece Forged and Fabricated Alloy Steel Crankshaft

The power balanced crankshaft reduces noise and vibration and extends the life of the bearing and crankshaft life. Rather than using a multipiece bolted component, the LEWCO crankshaft is made of one-piece, forged and fabricated alloy steel construction. It is repairable to help reduce operating expense and its bearings are lubricated via drilled internal passageways for longevity.



Welded Steel Power Frame

The mud pump power frame is engineered for performance, reliability and toughness. Designed for discharge pressures as high as 7500 psi, it is an independent, precision-fabricated structure of double-wall welded steel, with stiffeners and gussets for added strength and durability. As opposed to pumps mounted on an integral skid, LEWCO mud pumps come mounted on a heavy-duty oilfield skid for mobility and increased alignment capability, reducing component wear caused by internal stresses.



Triple-Redundant Power End Lubrication

The LEWCO triple-redundant, filtered lubrication system includes internal gravity/splash plus internal/external force-feeding of most of its power end bearings and upper/lower crosshead slides. For protection even at low operating speeds, the system includes a gear-driven mechanical pump off the main gear and a second pump driven by an electric motor.



Fluid End Modules

LEWCO fluid end modules are available in one or two-piece configurations using quenched and tempered forged steel material. Cameron can furnish fluid end modules compatible with various mud pump brands already in use, eliminating the need to stock extra spares. Fluid end expendables are off-the-shelf parts, readily available from domestic and international Cameron facilities, further minimizing the need for additional stocking.



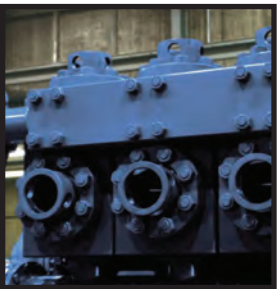
Forged Alloy Steel Pinions and Gears

Double helix, or herringbone, gear sets provide impressive load transmission and quiet operation, while heat treatment enhances strength and durability.



Steel Connecting Rods

The LEWCO rolled plate, low-carbon steel connecting rods maintain precise alignment between the crankshaft and crosshead under maximum load. These rods feature double-row cylindrical roller bearings in the crosshead end and single row cylindrical bearings in the crankshaft end, reducing wear and friction under severe operating conditions.



Discharge Manifold and Cross

Made of forged, heat-treated steel for ruggedness, LEWCO discharge manifolds are designed to provide reliable connections and easy module maintenance. The pieces are available in working pressures of 3000, 5000 and 7500 psi and in various flange outlet configurations with clean-out strainers. On LEWCO pumps, the single-piece, trepanned manifold mounts directly to the front or back of the fluid ends, which eliminates connections between the discharge modules.



Threaded Cylinder Heads and Valve Covers

Threaded cylinder heads and valve covers provide quick and easy access to valves and liners.



Super Nuts on Main Bearing Cap

Used in lieu of hex nuts, super nuts eliminate the need for special tools that are not commonly available on drilling rigs.

LEWCO WH-Series Mud Pumps

Smaller Footprints. More Horsepower.

WH-Series: 1000 to 2200 hp rating

Developed for increased mobility, the WH-Series mud pumps deliver high performance in a compact design. Featuring small footprints and less weight, these pumps are ideal for applications where space is limited. LEWCO mud pumps feature a power balanced, single-piece forged steel crankshaft for smooth operation.



WH-1000 Triplex Piston Model – Continuous Duty Performance Data								
Stroke, in (mm): 9 (228.6)			Gear Ratio: 4.32			Rated hp (kW): 1000 (746) @ 160 Spm		
PUMP SPEED (Spm)			160	140	120	100	80	60
MAXIMUM INPUT HP (kW) rating ¹			1000 (746)	875 (652)	750 (559)	625 (466)	500 (373)	375 (280)
LINER SIZE in (mm)	MAX DISCHARGE PRESSURE psi (kg/cm ²)	VOLUME/STROKE gal (l) per revolution	OUTPUT gal(l)/min ²					
7 (177.8)	2143 (150.7)	4.498 (17.026)	720 (2724)	630 (2384)	540 (2043)	450 (1703)	360 (1362)	270 (1022)
6-1/2 (165.1)	2486 (174.8)	3.879 (14.680)	621 (2349)	543 (2055)	465 (1762)	388 (1468)	310 (1175)	233 (881)
6 (152.4)	2917 (205.1)	3.305 (12.509)	529 (2002)	463 (1751)	397 (1501)	330 (1251)	264 (1001)	198 (751)
5-1/2 (139.7)	3472 (244.1)	2.777 (10.511)	444 (1682)	389 (1472)	333 (1261)	278 (1051)	222 (841)	167 (631)
5 (127.0)	4201 (295.4)	2.295 (8.687)	367 (1390)	321 (1216)	275 (1042)	229 (869)	184 (695)	138 (521)
4-1/2 (114.3)	5186 (364.6)	1.859 (7.036)	297 (1126)	260 (985)	223 (844)	186 (704)	149 (563)	112 (422)
4 (101.6)	5000 (351.5)	1.469 (5.559)	235 (890)	206 (778)	176 (667)	147 (556)	118 (445)	88 (334)

¹Based on 90% mechanical efficiency ²Based on 100% volumetric efficiency
All specifications are subject to change. Information important to a particular application should be verified by Cameron.

WH-1312 Triplex Piston Model – Continuous Duty Performance Data								
Stroke, in (mm): 12 (304.8)			Gear Ratio: 4.43			Rated hp (kW): 1300 (969) @ 130 Spm		
PUMP SPEED (Spm)			130	110	90	70	50	30
MAXIMUM INPUT HP (kW) rating ¹			1300 (969)	1100 (820)	900 (671)	700 (522)	500 (373)	300 (224)
LINER SIZE in (mm)	MAX DISCHARGE PRESSURE psi (kg/cm ²)	VOLUME/STROKE gal (l) per revolution	OUTPUT gal(l)/min ²					
6-3/4 (171.5)	2766 (194.5)	5.577 (21.108)	725 (2744)	613 (2322)	502 (1900)	390 (1478)	279 (1056)	167 (633)
6-1/2 (165.1)	2983 (209.7)	5.171 (19.574)	672 (2545)	569 (2153)	465 (1762)	362 (1370)	259 (979)	155 (587)
6 (152.4)	3501 (246.1)	4.406 (16.678)	573 (2168)	485 (1835)	397 (1501)	308 (1168)	220 (834)	132 (500)
5-1/2 (139.7)	4166 (292.9)	3.703 (14.014)	481 (1822)	407 (1542)	333 (1261)	259 (981)	185 (701)	111 (420)
5 (127.0)	5000 (351.5)	3.060 (11.582)	398 (1506)	337 (1274)	275 (1042)	214 (811)	153 (579)	92 (347)

¹Based on 90% mechanical efficiency ²Based on 100% volumetric efficiency
All specifications are subject to change. Information important to a particular application should be verified by Cameron.

WH-1612 Triplex Piston Model – Continuous Duty Performance Data								
Stroke, in (mm): 12 (304.8)			Gear Ratio: 4.41			Rated hp (kW): 1600 (1193) @ 120 Spm		
PUMP SPEED (Spm)			120	110	100	90	80	70
MAXIMUM INPUT HP (kW) rating ¹			1600 (1193)	1467 (1094)	1333 (994)	1200 (895)	1067 (795)	933 (696)
LINER SIZE in (mm)	MAX DISCHARGE PRESSURE psi (kg/cm ²) ³	VOLUME/STROKE gal (l) per revolution	OUTPUT gal(l)/min ²					
7-1/2 (190.5) ⁴	2987 (210.0)	6.885 (26.060)	826 (3127)	757 (2867)	688 (2606)	620 (2346)	551 (2085)	482 (1824)
7 (177.8)	3429 (241.1)	5.998 (22.701)	720 (2724)	660 (2497)	600 (2270)	540 (2043)	480 (1816)	420 (1589)
6-1/2 (165.1)	3997 (279.6)	5.171 (19.574)	621 (2349)	569 (2153)	517 (1958)	465 (1762)	414 (1566)	362 (1370)
6 (152.4)	4668 (328.2)	4.406 (16.678)	529 (2002)	485 (1835)	441 (1668)	397 (1501)	353 (1334)	308 (1168)
5-1/2 (139.7)	5555 (390.6)	3.703 (14.014)	444 (1682)	407 (1542)	370 (1402)	333 (1261)	296 (1121)	259 (981)
5 (127.0)	6722 (472.6)	3.060 (11.582)	367 (1390)	337 (1274)	306 (1158)	275 (1042)	245 (927)	214 (811)
4-1/2 (114.3)	7500 (527.3)	2.479 (9.381)	297 (1126)	273 (1032)	248 (938)	223 (844)	198 (751)	174 (657)

¹Based on 90% mechanical efficiency ²Based on 100% volumetric efficiency ³Pressures greater than 5000 psi require high-pressure fluid ends

⁴Liner is induction-hardened, therefore liner life is reduced

All specifications are subject to change. Information important to a particular application should be verified by Cameron.

WH-2012 Triplex Piston Model – Continuous Duty Performance Data								
Stroke, in (mm): 12 (304.8)			Gear Ratio: 4.41			Rated hp (kW): 2000 (1491) @ 140 Spm		
PUMP SPEED (Spm)			140	130	120	110	100	90
MAXIMUM INPUT HP (kW) rating ¹			2000 (1491)	1857 (1385)	1714 (1278)	1571 (1172)	1429 (1065)	1286 (959)
LINER SIZE in (mm)	MAX DISCHARGE PRESSURE psi (kg/cm ²) ³	VOLUME/STROKE gal (l) per revolution	OUTPUT gal(l)/min ²					
7-1/2 (190.5) ⁴	3201 (225.0)	6.885 (26.060)	964 (3649)	895 (3388)	826 (3127)	757 (2867)	688 (2606)	620 (2346)
7 (177.8)	3674 (258.3)	5.998 (22.701)	840 (3178)	780 (2951)	720 (2724)	660 (2497)	600 (2270)	540 (2043)
6-1/2 (165.1)	4261 (299.6)	5.171 (19.574)	724 (2741)	672 (2545)	621 (2349)	569 (2153)	517 (1958)	465 (1762)
6 (152.4)	5001 (351.6)	4.406 (16.678)	617 (2335)	573 (2168)	529 (2002)	485 (1835)	441 (1668)	397 (1501)
5-1/2 (139.7)	5952 (418.5)	3.703 (14.014)	518 (1962)	481 (1822)	444 (1682)	407 (1542)	370 (1402)	333 (1261)
5 (127.0)	7202 (506.3)	3.060 (11.582)	428 (1622)	398 (1506)	367 (1390)	337 (1274)	306 (1158)	275 (1042)
4-1/2 (114.3)	7500 (527.3)	2.479 (9.381)	347 (1314)	322 (1220)	297 (1126)	273 (1032)	248 (938)	223 (844)

¹Based on 90% mechanical efficiency ²Based on 100% volumetric efficiency ³Pressures greater than 5000 psi require high-pressure fluid ends

⁴Liner is induction-hardened, therefore liner life is reduced

All specifications are subject to change. Information important to a particular application should be verified by Cameron.

WH-2214 Triplex Piston Model – Continuous Duty Performance Data								
Stroke, in (mm): 14 (355.6)			Gear Ratio: 4.84			Rated hp (kW): 2200 (1641) @ 120 Spm		
PUMP SPEED (Spm)			120	110	100	90	80	70
MAXIMUM INPUT HP (kW) rating ¹			2200 (1641)	2017 (1504)	1833 (1367)	1650 (1230)	1467 (1094)	1283 (957)
LINER SIZE in (mm)	MAX DISCHARGE PRESSURE psi (kg/cm ²) ³	VOLUME/STROKE gal (l) per revolution	OUTPUT gal(l)/min ²					
7-1/2 (190.5)	3521 (247.5)	8.032 (30.403)	964 (3649)	884 (3345)	803 (3041)	723 (2737)	643 (2432)	562 (2128)
7 (177.8)	4042 (284.2)	6.997 (26.484)	840 (3178)	770 (2914)	700 (2649)	630 (2384)	560 (2119)	490 (1854)
6-1/2 (165.1)	4687 (329.6)	6.033 (22.836)	724 (2741)	664 (2512)	603 (2284)	543 (2055)	483 (1827)	422 (1599)
6 (152.4)	5501 (386.6)	5.141 (19.458)	617 (2335)	565 (2141)	514 (1946)	463 (1751)	411 (1557)	360 (1362)
5-1/2 (139.7)	6547 (460.3)	4.320 (16.350)	518 (1962)	475 (1799)	432 (1635)	389 (1472)	346 (1308)	302 (1145)
5 (127.0)	7500 (527.3)	3.570 (13.512)	428 (1622)	393 (1486)	357 (1351)	321 (1216)	286 (1081)	250 (946)

¹Based on 90% mechanical efficiency ²Based on 100% volumetric efficiency

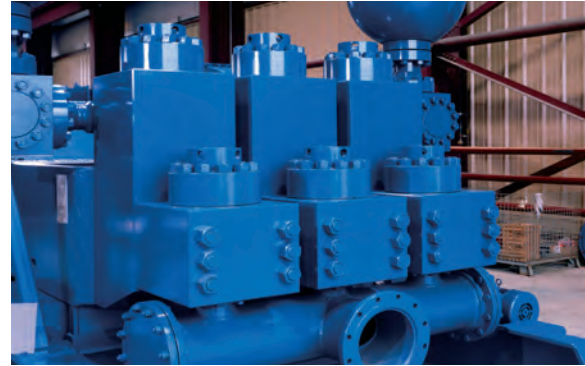
All specifications are subject to change. Information important to a particular application should be verified by Cameron.

LEWCO W-Series Mud Pumps

Built Strong to Last Long.

W-Series: 440 to 3000 hp rating

LEWCO W-Series mud pumps are built for durability, longevity and are designed with a welded power steel frame that features supplementary steel for operational efficiency. The W-Series line includes robust, high pressure, low maintenance pumps to increase drilling performance. LEWCO mud pumps feature a power balanced, single-piece forged and fabricated alloy steel crankshaft for smooth operation.



W-446 SuperForce Triplex Piston Model – Continuous Duty Performance Data								
Stroke, in (mm): 6 (152.4)			Gear Ratio: 4.53			Rated hp (kW): 440 (328) @ 300 Spm		
PUMP SPEED (Spm)			300	250	200	150	100	50
MAXIMUM INPUT HP (kW) rating ¹			440 (328)	367 (273)	293 (219)	220 (164)	147 (109)	73 (55)
LINER SIZE in (mm)	MAX DISCHARGE PRESSURE psi (kg/cm ²)	VOLUME/ STROKE gal (l) per revolution	OUTPUT gal(l)/min ²					
6 (152.4)	1027 (72.2)	2.203 (8.339)	661 (2502)	551 (2085)	441 (1668)	330 (1251)	220 (834)	110 (417)
5-1/2 (139.7)	1222 (85.9)	1.851 (7.007)	555 (2102)	463 (1752)	370 (1402)	278 (1051)	185 (701)	93 (350)
5 (127.0)	1479 (104.0)	1.530 (5.791)	459 (1737)	382 (1448)	306 (1158)	229 (869)	153 (579)	76 (290)
4-1/2 (114.3)	1826 (128.4)	1.239 (4.691)	372 (1407)	310 (1173)	248 (938)	186 (704)	124 (469)	62 (235)
4 (101.6)	2311 (162.4)	0.979 (3.706)	294 (1112)	245 (927)	196 (741)	147 (556)	98 (371)	49 (185)
3-1/2 (88.9)	3000 (210.9)	0.750 (2.838)	225 (851)	187 (709)	150 (568)	112 (426)	75 (284)	37 (142)

¹Based on 90% mechanical efficiency ²Based on 100% volumetric efficiency
All specifications are subject to change. Information important to a particular application should be verified by Cameron.

W-1100 Triplex Piston Model – Continuous Duty Performance Data								
Stroke, in (mm): 10 (254.0)			Gear Ratio: 4.43			Rated hp (kW): 1100 (820) @ 140 Spm		
PUMP SPEED (Spm)			140	125	115	105	95	85
MAXIMUM INPUT HP (kW) rating ¹			1100 (820)	982 (732)	904 (674)	825 (615)	746 (557)	668 (498)
LINER SIZE in (mm)	MAX DISCHARGE PRESSURE psi (kg/cm ²)	VOLUME/ STROKE gal (l) per revolution	OUTPUT gal(l)/min ²					
7 (177.8)	2425 (176.8)	4.998 (18.917)	700 (2649)	625 (2365)	575 (2176)	525 (1986)	475 (1797)	425 (1608)
6-1/2 (165.1)	2812 (205.1)	4.309 (16.311)	603 (2284)	539 (2039)	496 (1876)	452 (1713)	409 (1550)	366 (1387)
6 (152.4)	3301 (240.7)	3.672 (13.898)	514 (1946)	459 (1737)	422 (1598)	386 (1459)	349 (1320)	312 (1181)
5-1/2 (139.7)	3928 (286.4)	3.085 (11.679)	432 (1635)	386 (1460)	355 (1343)	324 (1226)	293 (1110)	262 (993)
5 (127.0)	4753 (276.2)	2.550 (9.652)	357 (1351)	319 (1207)	293 (1110)	268 (1014)	242 (917)	217 (820)
4-1/2 (114.3)	5000 (351.5)	2.065 (7.818)	289 (1095)	258 (977)	238 (899)	217 (821)	196 (743)	176 (665)

¹Based on 90% mechanical efficiency ²Based on 100% volumetric efficiency
All specifications are subject to change. Information important to a particular application should be verified by Cameron.

W-1712 Triplex Piston Model – Continuous Duty Performance Data								
Stroke, in (mm): 12 (304.8)			Gear Ratio: 4.84			Rated hp (kW): 1700 (1268) @ 120 Spm		
PUMP SPEED (Spm)			120	110	100	90	80	70
MAXIMUM INPUT HP (kW) rating ¹			1700 (1268)	1558 (1162)	1417 (1056)	1275 (951)	1133 (845)	992 (739)
LINER SIZE in (mm)	MAX DISCHARGE PRESSURE psi (kg/cm ²) ³	VOLUME/STROKE gal (l) per revolution	OUTPUT gal(l)/min ²					
7-1/2 (190.5) ⁴	3174 (223.2)	6.885 (26.060)	826 (3127)	757 (2867)	688 (2606)	620 (2346)	551 (2085)	482 (1824)
7 (177.8)	3644 (256.2)	5.998 (22.701)	720 (2724)	660 (2497)	600 (2270)	540 (2043)	480 (1816)	420 (1589)
6-1/2 (165.1)	4226 (297.1)	5.171 (19.574)	621 (2349)	569 (2153)	517 (1958)	465 (1762)	414 (1566)	362 (1370)
6 (152.4)	4960 (348.7)	4.406 (16.678)	529 (2002)	485 (1835)	441 (1668)	397 (1501)	353 (1334)	308 (1168)
5-1/2 (139.7)	5902 (415.0)	3.703 (14.014)	444 (1682)	407 (1542)	370 (1402)	333 (1261)	296 (1121)	259 (981)
5 (127.0)	7142 (502.1)	3.060 (11.582)	367 (1390)	337 (1274)	306 (1158)	275 (1042)	245 (927)	214 (811)
4-1/2 (114.3)	7500 (527.3)	2.479 (9.381)	297 (1126)	273 (1032)	248 (938)	223 (844)	198 (751)	174 (657)

¹Based on 90% mechanical efficiency ²Based on 100% volumetric efficiency ³Pressures greater than 5000 psi require high-pressure fluid ends

⁴Liner is induction-hardened, therefore liner life is reduced

All specifications are subject to change. Information important to a particular application should be verified by Cameron.

W-1714 Triplex Piston Model – Continuous Duty Performance Data								
Stroke, in (mm): 14 (355.6)			Gear Ratio: 4.84			Rated hp (kW): 1700 (1268) @ 110 Spm		
PUMP SPEED (Spm)			110	100	90	80	70	60
MAXIMUM INPUT HP (kW) rating ¹			1700 (1268)	1545 (1152)	1391 (1037)	1236 (922)	1082 (807)	927 (691)
LINER SIZE in (mm)	MAX DISCHARGE PRESSURE psi (kg/cm ²) ³	VOLUME/STROKE gal (l) per revolution	OUTPUT gal(l)/min ²					
7-1/2 (190.5) ⁴	2968 (208.7)	8.032 (30.403)	884 (3345)	803 (3041)	723 (2737)	643 (2432)	562 (2128)	482 (1824)
7 (177.8)	3407 (239.5)	6.997 (26.484)	770 (2914)	700 (2649)	630 (2384)	560 (2119)	490 (1854)	420 (1589)
6-1/2 (165.1)	3951 (277.8)	6.033 (22.836)	664 (2512)	603 (2284)	543 (2055)	483 (1827)	422 (1599)	362 (1370)
6 (152.4)	4637 (326.0)	5.141 (19.458)	565 (2141)	514 (1946)	463 (1751)	411 (1557)	360 (1362)	308 (1168)
5-1/2 (139.7)	5519 (388.0)	4.320 (16.350)	475 (1799)	432 (1635)	389 (1472)	346 (1308)	302 (1145)	259 (981)
5 (127.0)	6678 (469.5)	3.570 (13.512)	393 (1486)	357 (1351)	321 (1216)	286 (1081)	250 (946)	214 (811)
4-1/2 (114.3)	7500 (527.3)	2.892 (10.945)	318 (1204)	289 (1095)	260 (985)	231 (876)	202 (766)	174 (657)

¹Based on 90% mechanical efficiency ²Based on 100% volumetric efficiency ³Pressures greater than 5000 psi require high-pressure fluid ends

⁴Liner is induction-hardened, therefore liner life is reduced

All specifications are subject to change. Information important to a particular application should be verified by Cameron.

LEWCO W-Series Mud Pumps

W-2214 Triplex Piston Model – Continuous Duty Performance Data								
Stroke, in (mm): 14 (355.6)			Gear Ratio: 4.82			Rated hp (kW): 2200 (1641) @ 110 Spm		
PUMP SPEED (Spm)			110	100	90	80	70	60
MAXIMUM INPUT HP (kW) rating ¹			2200 (1641)	2000 (1491)	1800 (1342)	1600 (1193)	1400 (1044)	1200 (895)
LINER SIZE in (mm)	MAX DISCHARGE PRESSURE psi (kg/cm ²) ²	VOLUME/ STROKE gal (l) per revolution	OUTPUT gal(l)/min ²					
9 (228.6) ³	2667 (187.5)	11.567 (43.780)	1272 (4816)	1157 (4378)	1041 (3941)	925 (3503)	810 (3065)	694 (2627)
8-1/2 (215.9) ³	2990 (210.2)	10.317 (39.051)	1135 (4296)	1032 (3905)	929 (3515)	825 (3124)	722 (2734)	619 (2343)
8 (203.2)	3376 (237.3)	9.139 (34.592)	1005 (3805)	914 (3459)	823 (3114)	731 (2768)	640 (2422)	548 (2076)
7-1/2 (190.5)	3841 (270.0)	8.032 (30.403)	884 (3345)	803 (3041)	723 (2737)	643 (2432)	562 (2128)	482 (1824)
7 (177.8)	4409 (310.0)	6.997 (26.484)	770 (2914)	700 (2649)	630 (2384)	560 (2119)	490 (1854)	420 (1589)
6-1/2 (165.1)	5114 (359.5)	6.033 (22.837)	664 (2513)	603 (2283)	543 (2055)	483 (1828)	422 (1597)	362 (1370)
6 (152.4)	6001 (421.9)	5.141 (19.460)	565 (2139)	514 (1948)	463 (1753)	411 (1556)	360 (1363)	308 (1166)
5-1/2 (139.7)	7142 (502.1)	4.320 (16.353)	475 (1798)	432 (1635)	389 (1472)	346 (1310)	302 (1143)	259 (980)
5 (127.0)	7500 (527.3)	3.570 (13.510)	393 (1487)	357 (1351)	321 (1215)	286 (1083)	250 (946)	214 (810)

¹Based on 90% mechanical efficiency ²Based on 100% volumetric efficiency ³Requires special retention system; liner is induction-hardened, therefore liner life is reduced
All specifications are subject to change. Information important to a particular application should be verified by Cameron.

W-2215 Triplex Piston Model – Continuous Duty Performance Data								
Stroke, in (mm): 15 (381.0)			Gear Ratio: 4.82			Rated hp (kW): 2200 (1641) @ 110 Spm		
PUMP SPEED (Spm)			110	100	90	80	70	60
MAXIMUM INPUT HP (kW) rating ¹			2200 (1641)	2000 (1491)	1800 (1342)	1600 (1193)	1400 (1044)	1200 (895)
LINER SIZE in (mm)	MAX DISCHARGE PRESSURE psi (kg/cm ²) ²	VOLUME/ STROKE gal (l) per revolution	OUTPUT gal(l)/min ²					
9 (228.6) ³	2489 (175.0)	12.393 (46.907)	1363 (5160)	1239 (4691)	1115 (4222)	991 (3753)	868 (3284)	744 (2815)
8-1/2 (215.9) ³	2791 (196.2)	11.054 (41.840)	1216 (4603)	1105 (4184)	995 (3766)	884 (3348)	774 (2929)	663 (2511)
8 (203.2)	3151 (221.5)	9.792 (37.063)	1077 (4077)	979 (3707)	881 (3336)	783 (2965)	685 (2595)	588 (2224)
7-1/2 (190.5)	3585 (252.0)	8.606 (32.575)	947 (3584)	861 (3258)	775 (2932)	688 (2606)	602 (2280)	516 (1955)
7 (177.8)	4115 (289.3)	7.497 (28.376)	825 (3122)	750 (2838)	675 (2554)	600 (2270)	525 (1986)	450 (1703)
6-1/2 (165.1)	4773 (335.6)	6.464 (24.467)	711 (2692)	646 (2447)	582 (2202)	517 (1958)	452 (1713)	388 (1468)
6 (152.4)	5601 (393.8)	5.508 (20.848)	606 (2293)	551 (2085)	496 (1876)	441 (1668)	386 (1459)	330 (1251)
5-1/2 (139.7)	6666 (468.7)	4.628 (17.518)	509 (1927)	463 (1752)	417 (1577)	370 (1402)	324 (1226)	278 (1051)
5 (127.0)	7500 (527.3)	3.825 (14.478)	421 (1593)	382 (1448)	344 (1303)	306 (1158)	268 (1014)	229 (869)

¹Based on 90% mechanical efficiency ²Based on 100% volumetric efficiency ³Requires special retention system; liner is induction-hardened, therefore liner life is reduced
All specifications are subject to change. Information important to a particular application should be verified by Cameron.

W-3000 Triplex Piston Model – Continuous Duty Performance Data								
Stroke, in (mm): 16 (406.4)			Gear Ratio: 4.36			Rated hp (kW): 3000 (2237) @ 100 Spm		
PUMP SPEED (Spm)			100	90	80	70	60	50
MAXIMUM INPUT HP (kW) rating ¹			3000 (2237)	2700 (2013)	2400 (1790)	2100 (1566)	1800 (1342)	1500 (1119)
LINER SIZE in (mm)	MAX DISCHARGE PRESSURE psi (kg/cm ²) ²	VOLUME/ STROKE gal (l) per revolution	OUTPUT gal(l)/min ²					
			100	90	80	70	60	50
9 (228.6) ³	3501 (246.1)	13.219 (50.035)	1322 (5004)	1190 (4504)	1058 (4003)	925 (3503)	793 (3002)	661 (2502)
8-1/2 (215.9)	3925 (275.9)	11.791 (44.630)	1179 (4463)	1061 (4017)	943 (3571)	825 (3124)	707 (2678)	590 (2232)
8 (203.2)	4431 (311.5)	10.445 (39.533)	1044 (3954)	940 (3558)	836 (3163)	731 (2768)	627 (2372)	522 (1977)
7-1/2 (190.5)	5041 (354.4)	9.180 (34.746)	918 (3475)	826 (3127)	734 (2780)	643 (2432)	551 (2085)	459 (1737)
7 (177.8)	5787 (406.9)	7.997 (30.268)	800 (3027)	720 (2724)	640 (2422)	560 (2119)	480 (1816)	400 (1514)
6-1/2 (165.1)	6712 (471.9)	6.895 (26.098)	690 (2610)	621 (2349)	552 (2088)	483 (1827)	414 (1566)	345 (1305)
6 (152.4)	7500 (527.3)	5.875 (22.238)	588 (2224)	529 (2002)	470 (1779)	411 (1557)	353 (1334)	294 (1112)

¹Based on 90% mechanical efficiency ²Based on 100% volumetric efficiency ³Requires special retention system; liner is induction-hardened, therefore liner life is reduced
 All specifications are subject to change. Information important to a particular application should be verified by Cameron.

Call Center

Tel 1.832.782.6742

6401 W Sam Houston Pkwy N

Houston, TX 77041

USA

Tel 1.713.983.4700

45 Tuas View Close, Trade Link Place

Singapore 637476

Tel 65.6863.1970

Rua Dezenove de Fevereiro, 171

Botafogo, Rio de Janeiro

22280-030, RJ

Brazil

Tel 55.21.3257.0000

PO Box 18456, RA-08, Blue Shed JA 05 & 06

Jebel Ali, Dubai

UAE

Tel 971.4.8880250

Learn more about LEWCO™ Drilling Equipment at:

www.c-a-m.com

**HSE Policy Statement**

At Cameron, we are committed ethically, financially and personally to a working environment where no one gets hurt, nothing gets harmed.