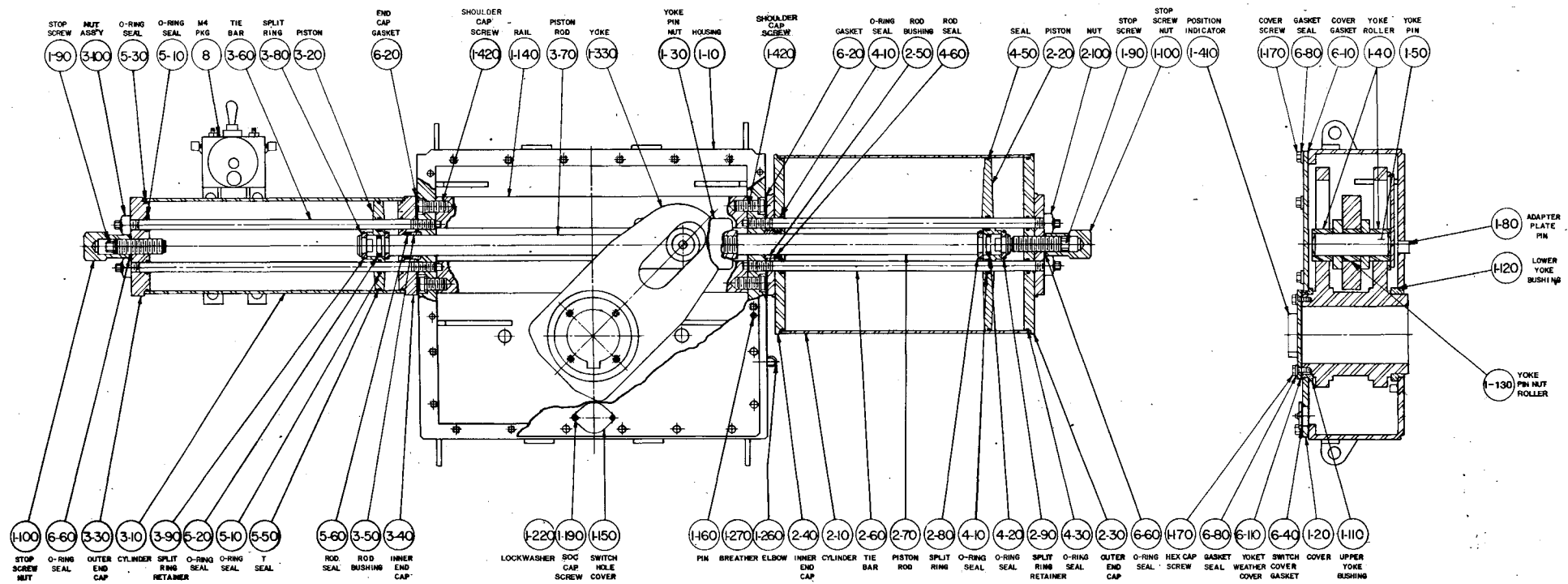
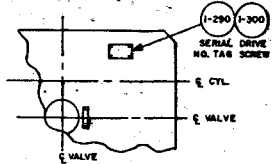


REVISIONS		
LTR	ECO	DATE
A	8670	9/20/85
B	8701	2/86
C	8910	9/5/86



- (1-90) STOP SCREW NUT
- (3-100) NUT ASSY
- (5-30) O-RING SEAL
- (5-10) O-RING SEAL
- (8) M4 PKG
- (3-60) TIE BAR
- (3-80) SPLIT RING
- (3-20) PISTON
- (6-20) END CAP GASKET
- (1-420) SHOULDER CAP SCREW
- (1-140) RAIL
- (3-70) PISTON ROD
- (1-330) YOKE
- (1-30) YOKE PIN NUT
- (1-10) YOKE HOUSING
- (1-420) SHOULDER CAP SCREW
- (6-20) GASKET
- (4-10) O-RING SEAL
- (2-50) ROD BUSHING
- (4-60) ROD SEAL
- (4-50) SEAL
- (2-20) PISTON
- (2-100) NUT
- (1-90) STOP SCREW
- (1-100) STOP SCREW NUT
- (1-410) POSITION INDICATOR
- (1-70) COVER SCREW
- (6-80) GASKET SEAL
- (6-10) COVER GASKET
- (1-40) YOKE ROLLER
- (1-50) YOKE PIN
- (1-180) ADAPTER PLATE PIN
- (1-120) LOWER YOKE BUSHING
- (1-130) YOKE PIN NUT ROLLER
- (1-100) STOP SCREW NUT
- (6-60) O-RING SEAL
- (3-30) OUTER END CAP
- (3-10) CYLINDER RING
- (3-90) SPLIT RING RETAINER
- (5-20) O-RING SEAL
- (5-10) O-RING SEAL
- (5-50) T SEAL
- (5-60) ROD SEAL
- (3-50) ROD BUSHING
- (3-40) INNER END CAP
- (1-220) LOCKWASHER
- (1-190) SOC CAP
- (1-150) SWITCH HOLE SCREW COVER
- (1-160) PIN
- (1-270) BREATHER ELBOW
- (1-260) INNER END CAP
- (2-40) CYLINDER END CAP
- (2-10) TIE BAR
- (2-60) PISTON ROD
- (2-70) SPLIT RING
- (2-80) O-RING SEAL
- (4-10) O-RING SEAL
- (4-20) SPLIT RING SEAL
- (2-90) O-RING SEAL
- (4-30) O-RING SEAL
- (2-30) OUTER END CAP
- (6-60) O-RING SEAL
- (1-70) HEX CAP SCREW
- (6-80) GASKET SEAL
- (6-10) YOKET WEATHER COVER
- (6-40) SWITCH COVER GASKET
- (1-20) COVER
- (1-110) UPPER YOKE BUSHING

NOT SHOWN

- (3-180) PIPE PLUG
- (3-170) BLEED VALVE
- (1-310) POSITION TAG CLOSED
- (3-320) POSITION TAG OPEN
- (6-150) GREASE
- (7) TUBING & FITTINGS

NOTES

- 1) SERIAL NO. TAG (1-290) TO BE PLACED ON TOP OF COVER.
- 2) ALL PARTS SHOULD BE INSPECTED AND CAREFULLY CLEANED TO REMOVE ALL DIRT AND OTHER FOREIGN MATTER.
- 3) APPLY GREASE (6-150) LIBERALLY TO ALL COMPONENTS BEFORE ASSY.
- 4) INSPECT PER ES-6.

* THIS DRAWING CONTAINS CONFIDENTIAL AND PROPRIETARY INFORMATION OF GIBBETTIS AND IS SUBMITTED TO YOU FOR THE LIMITED PURPOSE OF PROVIDING YOU INFORMATION TO FACILITATE YOUR USE AND/OR MAINTENANCE OF PRODUCTS PURCHASED BY YOU FROM GIBBETTIS. BY RECEIVING THIS DOCUMENT, YOU AGREE NOT TO USE SUCH CONFIDENTIAL INFORMATION FOR ANY PURPOSE OTHER THAN THE LIMITED PURPOSE SET FORTH AND FURTHER AGREE NOT TO DISCLOSE SUCH INFORMATION TO OTHERS EXCEPT IN ACCORDANCE WITH THE LIMITED PURPOSE STATED HEREIN.	GENERAL TOLERANCES UNLESS OTHERWISE SPECIFIED FINISH: 12.50 12.54 H: 0.000 0.768 J: 0.008 0.127 K: 0.015 0.127 L: 0.025 0.127 M: 0.038 0.127 N: 0.050 0.127 P: 0.063 0.127 R: 0.076 0.127 S: 0.088 0.127 T: 0.100 0.127 U: 0.113 0.127 V: 0.125 0.127 W: 0.138 0.127 X: 0.150 0.127 Y: 0.163 0.127 Z: 0.175 0.127 ROUNDED: 0.015 0.127 SQUARENESS: 0.015 0.127 TAPER: 0.015 0.127 PERPENDICULARITY: 0.015 0.127 PARALLELISM: 0.015 0.127 SURFACE FINISH: 0.015 0.127 SURFACE REMOVE BURRS AND SHARP EDGES FILLETS: 0.038 0.127	DWN JIM JONES - 11-20-85 CHK RGS 11-25-85 APP'D AGL 11/25/85 APP'D	TITLE: ASSEMBLY DRAWING TRIOXX-M4 ACTUATOR	<table border="1" style="width: 100%; border-collapse: collapse;"> <tr> <td style="width: 15px;">PART No.</td> <td style="width: 100px;">65107</td> <td style="width: 15px;">REV</td> <td style="width: 10px;">C</td> </tr> <tr> <td colspan="2">DO NOT SCALE DWG.</td> <td>SCALE NONE</td> <td>DWG SIZE D</td> </tr> <tr> <td colspan="2">SHEET 1 OF 1</td> <td colspan="2"></td> </tr> </table>	PART No.	65107	REV	C	DO NOT SCALE DWG.		SCALE NONE	DWG SIZE D	SHEET 1 OF 1			
PART No.	65107	REV	C													
DO NOT SCALE DWG.		SCALE NONE	DWG SIZE D													
SHEET 1 OF 1																

0-65107