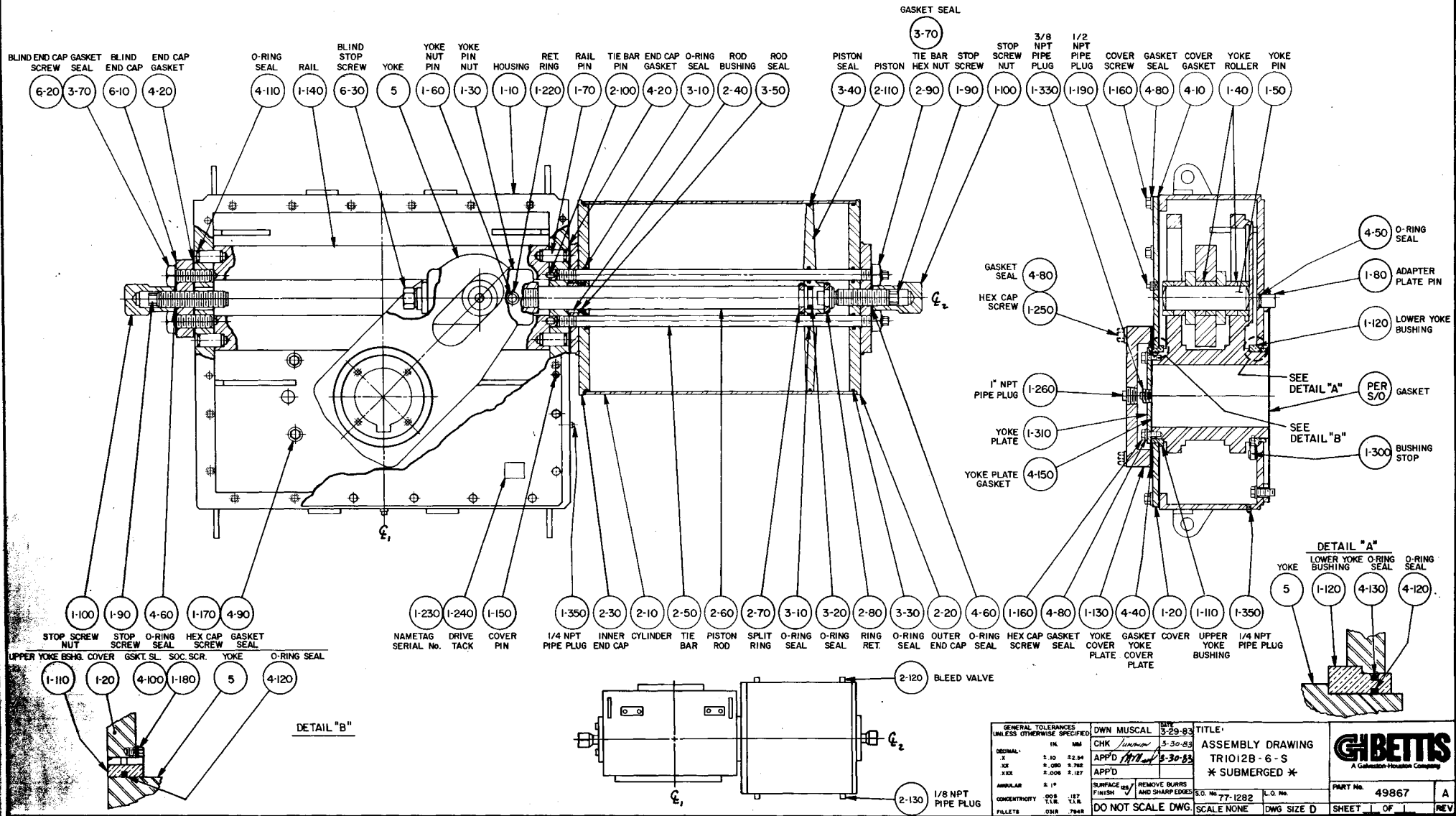


REVISIONS		
LTH	ECO	DATE
A	REL'D	3-31-83



BLIND END CAP SCREW 6-20
 GASKET SEAL 3-70
 BLIND END CAP 6-10
 END CAP GASKET 4-20

O-RING SEAL 4-110
 RAIL 1-140
 BLIND STOP SCREW 6-30
 YOKE 5

YOKE NUT PIN 1-60
 YOKE PIN NUT 1-30

HOUSING 1-10
 RET. RING 1-220
 RAIL PIN 1-70

TIE BAR PIN 2-100
 END CAP GASKET 4-20
 O-RING SEAL 3-10

ROD BUSHING 2-40
 ROD SEAL 3-50

PISTON SEAL 3-40
 PISTON 2-110

TIE BAR HEX NUT 2-90
 STOP SCREW 1-90

STOP NUT 1-00
 3/8 NPT PIPE PLUG 1-330

1/2 NPT PIPE PLUG 1-190
 COVER SCREW 1-160

GASKET SEAL 4-80
 COVER GASKET 4-10

YOKE GASKET 1-40
 YOKE ROLLER 1-50

STOP SCREW NUT 1-100
 STOP SCREW 1-90
 O-RING SEAL 4-60
 HEX CAP SCREW 1-170
 GASKET SEAL 4-90

UPPER YOKE BSHG. COVER 1-110
 GSKT. SL. 1-20
 SOC. SCR. 4-100
 YOKE 1-180
 O-RING SEAL 5
 O-RING SEAL 4-120

DETAIL "B"

NAMETAG SERIAL No. 1-230
 DRIVE TACK 1-240
 COVER PIN 1-150

1/4 NPT PIPE PLUG 1-350
 INNER CYLINDER END CAP 2-30
 TIE BAR 2-10
 PISTON ROD 2-50
 SPLIT RING 2-60
 O-RING SEAL 2-70
 O-RING SEAL 3-10
 O-RING SEAL 3-20
 RING RET. 2-80
 O-RING SEAL 3-30
 O-RING SEAL 2-20
 OUTER END CAP SEAL 4-60
 HEX CAP SCREW 1-160
 GASKET SEAL 4-80
 YOKE COVER PLATE 1-130
 YOKE COVER PLATE 4-40
 GASKET SEAL 1-20
 UPPER YOKE BUSHING 1-110
 1/4 NPT PIPE PLUG 1-350

GASKET SEAL 4-80
 HEX CAP SCREW 1-250

1" NPT PIPE PLUG 1-260

YOKE PLATE 1-310

YOKE PLATE GASKET 4-150

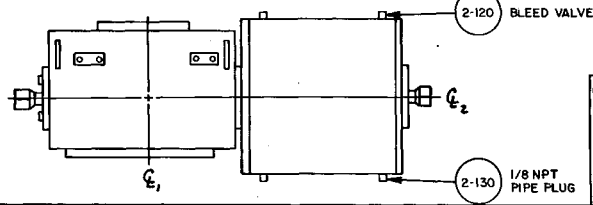
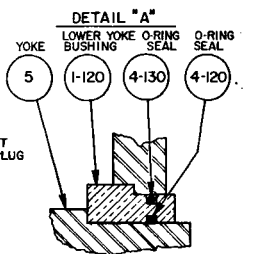
O-RING SEAL 4-50


ADAPTER PLATE PIN 1-80

LOWER YOKE BUSHING 1-120

SEE DETAIL "A" PER S/O GASKET

SEE DETAIL "B" BUSHING STOP 1-300



GENERAL TOLERANCES UNLESS OTHERWISE SPECIFIED:		OWN MUSCAL	DATE	TITLE	 A Collaboration-Houston Company
DECIMAL	IN	CHK	3-29-83	ASSEMBLY DRAWING	
.XX	0.00	APP'D	3-30-83	TR1012B-6-S	* SUBMERGED *
.XXX	0.000	APP'D			
ANGULAR	± 1°	SURFACE FINISH	REMOVE BURRS AND SHARP EDGES	S.O. No. 77-1282	L.O. No.
CONCENTRICITY	0.008 - 0.127	DO NOT SCALE DWG.	SCALE NONE	DWG SIZE D	SHEET
FILLETS	0.031 - 0.648				OF
					REV