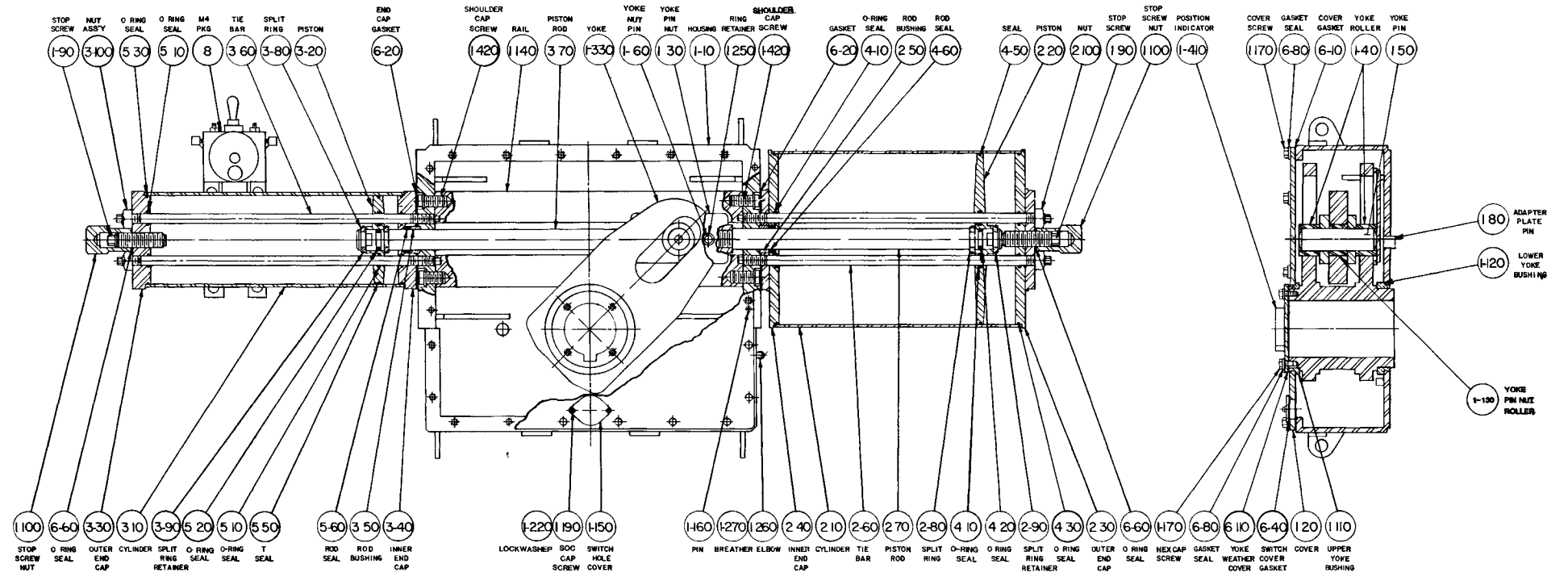
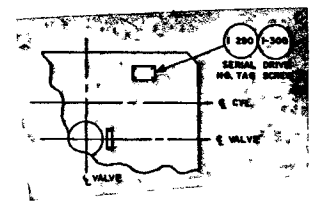


REVISIONS		
LTR	ECO	DATE
A	8870	11-21-88
B	8701	2/86
C	8910	9/3/82



- NOT SHOWN**
- 5-160 PIPE PLUG
 - 5-170 BLEED VALVE
 - 1-310 POSITION TAG CLOSED
 - 1-320 POSITION TAG OPEN
 - 6-150 GREASE
 - 7 TUBING & FITTINGS
 - 2-160 PIPE PLUG
 - 2-170 BLEED VALVE

- NOTES**
- 1) SERIAL NO TAG (1-290) TO BE PLACED ON TOP OF COVER
 - 2) ALL PARTS SHOULD BE INSPECTED AND CAREFULLY CLEANED TO REMOVE ALL DIRT AND OTHER FOREIGN MATTER
 - 3) APPLY GREASE (6-150) LIBERALLY TO ALL COMPONENTS BEFORE ASSY
 - 4) INSPECT PER ES 6

THIS DRAWING CONTAINS CONFIDENTIAL AND PROPRIETARY INFORMATION OF GIBBETTIS AND IS SUBMITTED TO YOU FOR THE LIMITED PURPOSE OF PROVIDING YOU INFORMATION TO FACILITATE YOUR USE AND MAINTENANCE OF PRODUCTS PURCHASED BY YOU FROM GIBBETTIS. BY RECEIVING THIS DOCUMENT YOU AGREE NOT TO USE SUCH CONFIDENTIAL INFORMATION FOR ANY PURPOSE OTHER THAN THE LIMITED PURPOSE STATED HEREIN AND FURTHER AGREE NOT TO DISCLOSE SUCH INFORMATION TO OTHERS EXCEPT IN ACCORDANCE WITH THE LIMITED PURPOSE STATED HEREIN.	GENERAL TOLERANCES UNLESS OTHERWISE SPECIFIED		DWN JIM JONES	DATE 11/25/88	TITLE	
	DECIMAL	IN	MM	CHK RGS	11/25/88	ASSEMBLY DRAWING
	X	± .10	± 0.54	APPROVAL	12/27/85	TR100-M4
	XX	± .050	± 0.762	APP D		ACTUATOR
ANGULAR	± 1					
CONCENTRICITY	0.05	± .012				
FILLET	0.031	± 0.008				
SURFACE FINISH		REMOVE BURRS AND SHARP EDGES	DO NOT SCALE DWG			
SCALE NONE		DWG SIZE D	SHEET 1 OF 1			
PART NO 65271		REV C		GIBETTIS A Galveston-Houston Company		

D-65271