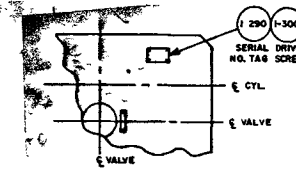


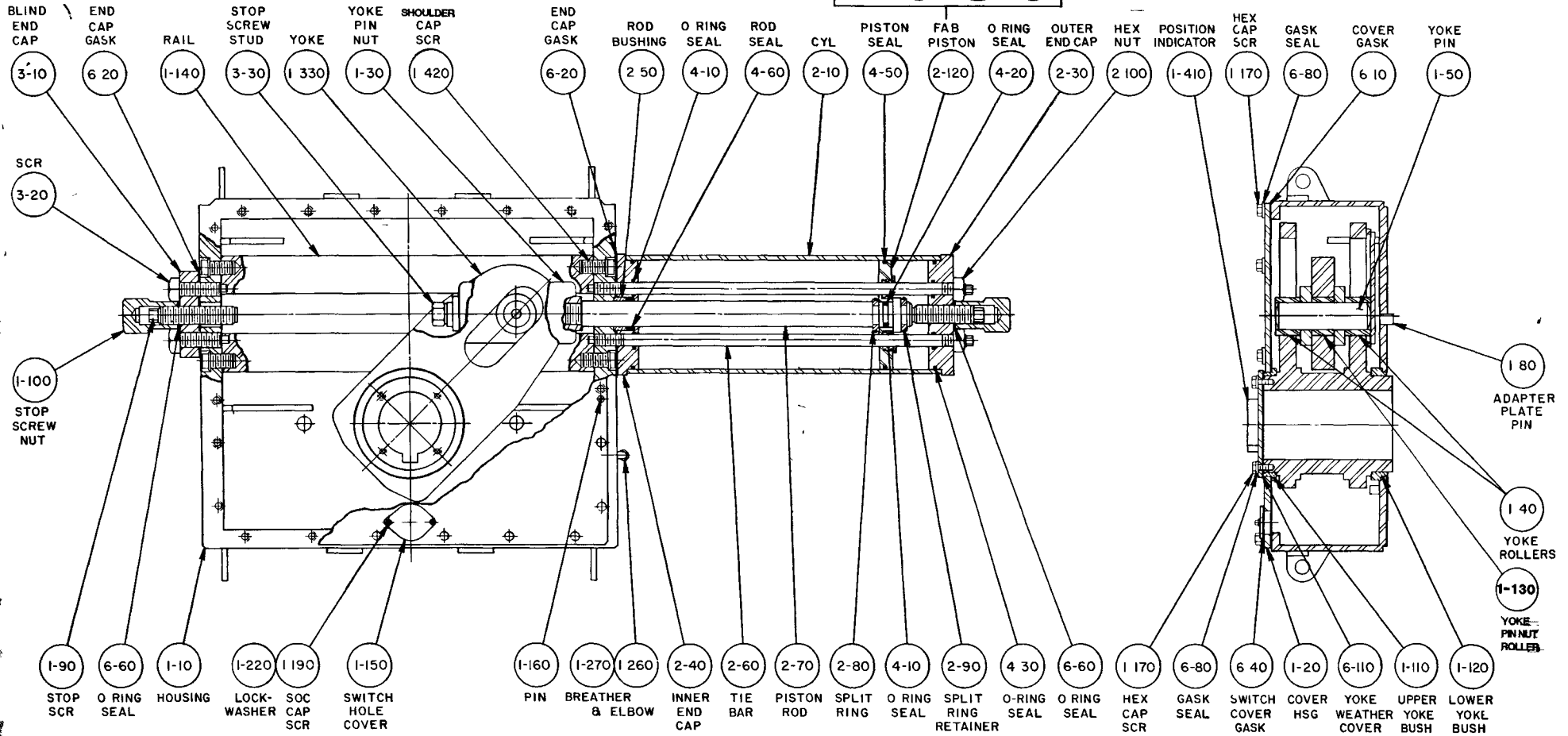
NOT SHOWN

- 1-310 POSITION TAG "CLOSED"
- 2-160 PIPE PLUG
- 6-150 GREASE
- 1-320 POSITION TAG "OPEN"
- 2-170 BLEED VALVE
- 1-305 DRIVE TACK

- TIE BAR BUSHING 2-130
- HEX WASHER SCR. 2-140
- PISTON SPACER 2-150
- O RING SEAL 4-40



REVISIONS		
LTN	ECO	DATE
A	8570	11-21-80
B	8701	2/785
C	8910	9/5/84



NOTES

- 1) SERIAL NO TAG (1-290) TO BE PLACED ON TOP OF COVER
- 2) ALL PARTS SHOULD BE INSPECTED AND CAREFULLY CLEANED TO REMOVE ALL DIRT AND OTHER FOREIGN MATTER
- 3) APPLY GREASE (6-150) LIBERALLY TO ALL COMPONENTS BEFORE ASSEMBLY
- 4) INSPECT PER ES-6

GENERAL TOLERANCES UNLESS OTHERWISE SPECIFIED	DWN JIM JONES	DATE 11/21/85	TITLE	GIBETTIS A Galveston-Houston Company
NORMAL 1/16 3/32 1/8 XX 1/32 1/16 1/8 XXX 1/64 1/32 1/16 ANGULAR 2 1/2 SURFACE FINISH REMOVE BURRS AND SHARP EDGES DIMENSIONS TO CENTER UNLESS OTHERWISE SPECIFIED PALLETS 0200 7948	CHK RGS	11/25/85	ASSEMBLY DRAWING	
	APP'D ALL	11/25/85	TRIO07	PART No. 65110 C
	APP'D		ACTUATOR	
	DO NOT SCALE DWG		SCALE NONE	DWG SIZE D
			SHEFT 1 OF 1	

D:65110