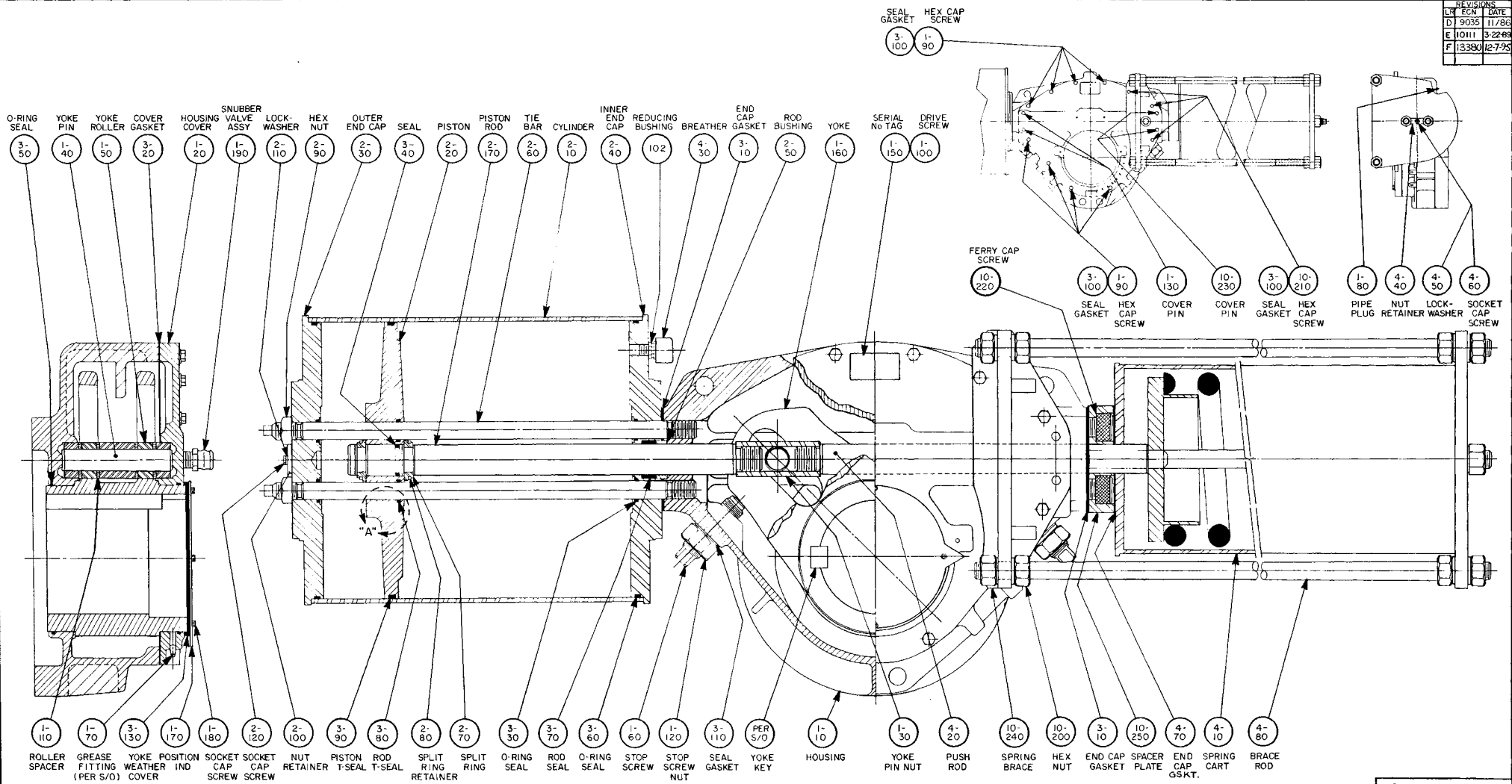
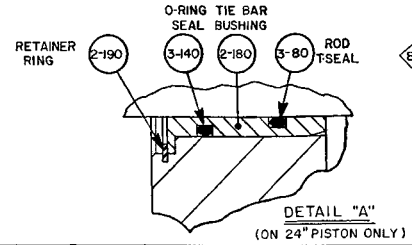


REVISIONS		
LT	ECN	DATE
D	9035	11/78
E	10111	3-22-89
F	13390	12-7-95



NOTES:

- 1.) SERIAL No. TAG (1-150) TO BE PLACED ON TOP OF HOUSING.
- 2.) ALL PARTS SHOULD BE INSPECTED AND CAREFULLY CLEANED TO REMOVE ALL DIRT AND OTHER FOREIGN MATTER.
- 3.) APPLY GREASE (3-150) LIBERALLY TO ALL COMPONENTS BEFORE ASSEMBLY.
- 4.) INSPECT PER ES-6.



* THIS DRAWING CONTAINS CONFIDENTIAL AND PROPRIETARY INFORMATION OF GH-BETTIS AND IS SUBMITTED TO YOU FOR THE LIMITED PURPOSE OF PROVIDING YOU INFORMATION TO FACILITATE YOUR USE AND/OR MAINTENANCE OF PRODUCTS PURCHASED BY YOU FROM GH-BETTIS. BY RECEIVING THIS DOCUMENT, YOU AGREE NOT TO USE SUCH CONFIDENTIAL INFORMATION FOR ANY PURPOSE OTHER THAN THE LIMITED PURPOSE STATED HEREIN AND FURTHER AGREE NOT TO DISCLOSE SUCH INFORMATION TO OTHERS EXCEPT IN ACCORDANCE WITH THE LIMITED PURPOSE STATED HEREIN.

GENERAL TOLERANCES UNLESS OTHERWISE SPECIFIED	DWN <i>[Signature]</i>	DATE 12-8-86	TITLE ASSEMBLY DRWG. T5XX-SR(CCW) ACTUATOR
DECIMAL .125	CHK <i>[Signature]</i>	12-9-86	
FRACTION 1/32	APPD <i>[Signature]</i>	12-9-86	
ANGLE .005	APPD		
CONCENTRICITY .005			
RUNOUT .005			
NULL			

DO NOT SCALE DWG	SHEET 1 OF 1
------------------	--------------

SCALE NONE DWG SIZE D SHEET 1 OF 1 REV

GH-BETTIS
A Galveston-Houston Company

PART No 48026 F