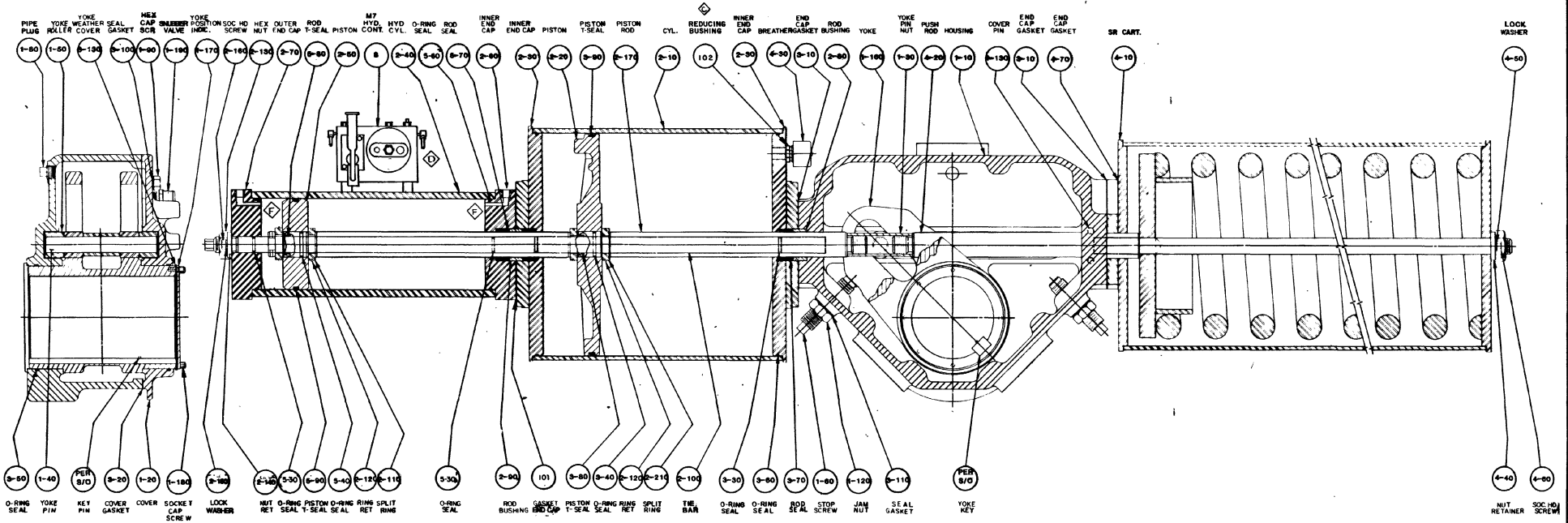
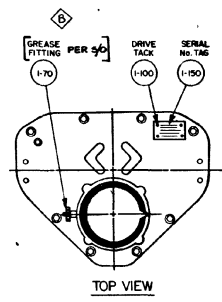


REV	NO	DATE
A	7433	1-25-82
B	7702	3-5-83
C	7895	10-25-83
D	8555	9-20-85
E	9078	2/87
F	9325	3-23-88



- NOTES:
- 1) ALL PARTS SHOULD BE INSPECTED AND CAREFULLY CLEANED TO REMOVE ALL DIRT AND OTHER FOREIGN MATTER.
 - 2) APPLY GREASE 2-100 TO ALL COMPONENTS AS INSTRUCTED IN THE OPERATING & MAINTENANCE INSTRUCTIONS BEFORE ASSEMBLY.
 - 3) INSPECT PER ES-6.



- NOT SHOWN:
- 2-230 PIPE PLUG
 - 2-100 BLEED VALVE
 - Y TUBING & FITTINGS
 - 3-100 GREASE

"THE DRAWING CONTAINS CONFIDENTIAL AND PROPRIETARY INFORMATION OF IN-BETTS AND IS SUBMITTED TO YOU FOR THE LIMITED PURPOSE OF PROVIDING YOU INFORMATION TO FACILITATE YOUR USE AND/OR MAINTENANCE OF PRODUCTS PURCHASED BY YOU FROM IN-BETTS. BY RECEIVING THIS DOCUMENT, YOU AGREE NOT TO USE SUCH CONFIDENTIAL INFORMATION FOR ANY PURPOSE OTHER THAN THE LIMITED PURPOSE SET FORTH HEREIN AND FURTHER AGREE NOT TO DISCLOSE SUCH INFORMATION TO OTHERS EXCEPT IN ACCORDANCE WITH THE LIMITED PURPOSE SET FORTH HEREIN."

MATERIAL	QUANTITY	UNIT	DESCRIPTION
GENERAL TOLERANCES			
FRACTIONAL	± .005		
DECIMALS	± .002		
ANGULAR DIMENSIONS	± .01°		
WELDING	± .005		
FINISH			
PLATING			
DRILLING			
REVISIONS			
DATE			
BY			
CHECKED			
APPROVED			
TITLE	ASSEMBLY DWG TAXI-SR (CGW)-M7 ACTUATOR		
SCALE	AS SHOWN		
FIG. NO.	D 48103		
REV.	F		