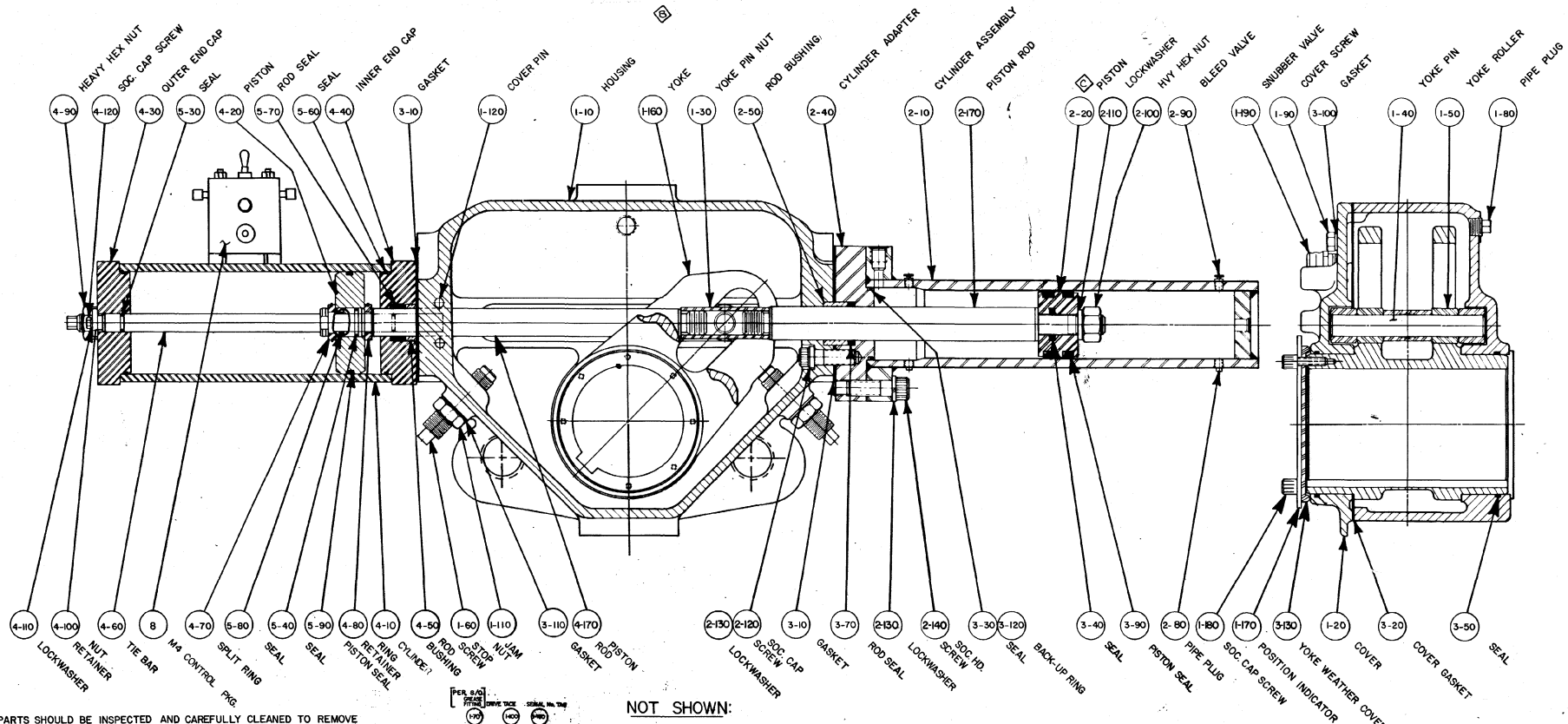
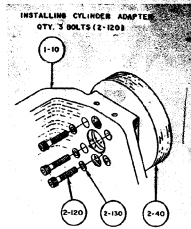
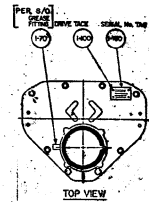


REVISIONS		
LTR	ECO	DATE
A	7873	9-30-83
B	8245	12-19-84
C	8340	3-13-85



NOTES:

- 1) ALL PARTS SHOULD BE INSPECTED AND CAREFULLY CLEANED TO REMOVE ALL DIRT AND OTHER FOREIGN MATTER.
- 2) APPLY GREASE LIBERALLY TO ALL COMPONENTS BEFORE ASSEMBLY.
- 3) COAT ALL SEALS WITH OIL BEFORE INSTALLATION.
- 4) SERIAL No. TAG (1-150) TO BE PLACED ON TOP OF HOUSING.
- 5) CHECK POSITION OF CYLINDER ADAPTER - PROPER SIDE FACING UP.



NOT SHOWN:

- 2-150 O-RING PLUG
- 4-150 PIPE PLUG
- 4-60 BLEED VALVE
- 3-50 GREASE
- 7 TUBS. & FITS.

"This drawing contains confidential and proprietary information of GIBBETT and is submitted to you for the limited purpose of providing you information to facilitate your use and/or maintenance of products purchased by you from GIBBETT. By the giving of this information you agree not to use such confidential information for any purpose other than the limited purpose stated herein and further agree not to disclose such information to others except as authorized in writing by GIBBETT."

GENERAL TOLERANCES UNLESS OTHERWISE SPECIFIED		DWN D. ROSS	DATE 9-30-83	TITLE: ASSEMBLY DRAWING T30X X-M4 ACTUATOR	 A Gibbeton-Houston Company
ORIGINAL	1/8	CHK	10-5-83		
X	5/16	APP'D			PART No. D-60893 C SHEET 1 OF 1 REV
XX	3/8	APP'D			
XXX	1/2				
ANNULAR	± .005	SURFACE FINISH REMOVE BURRS AND SHARP EDGES		S.O. No.	L.O. No.
CONCENTRICITY	± .002	DO NOT SCALE DWG.		SCALE NONE	DWG SIZE D
FILLET	± .015				

D-60893