

| REVISIONS | |
|-----------|----------------|
| REV. | DATE |
| A | 7/20/84 2-9-83 |
| B | 8/31/87 5/7/86 |
| C | 8/8/44 6-2-86 |

NOTES-

1) SERIAL NUMBER TAG (1-130) TO BE PLACED ON TOP OF HOUSING.

2) ALL PARTS SHOULD BE INSPECTED AND CAREFULLY CLEANED TO REMOVE ALL DIRT AND OTHER FOREIGN MATTER.

3) APPLY GREASE (3-150) LIBERALLY TO ALL COMPONENTS BEFORE ASSY.

4) COAT ALL SEALS WITH OIL BEFORE INSTALLATION.

5) USE "LOCTITE 242" FOR FLAT HD. SCREWS (1-330).

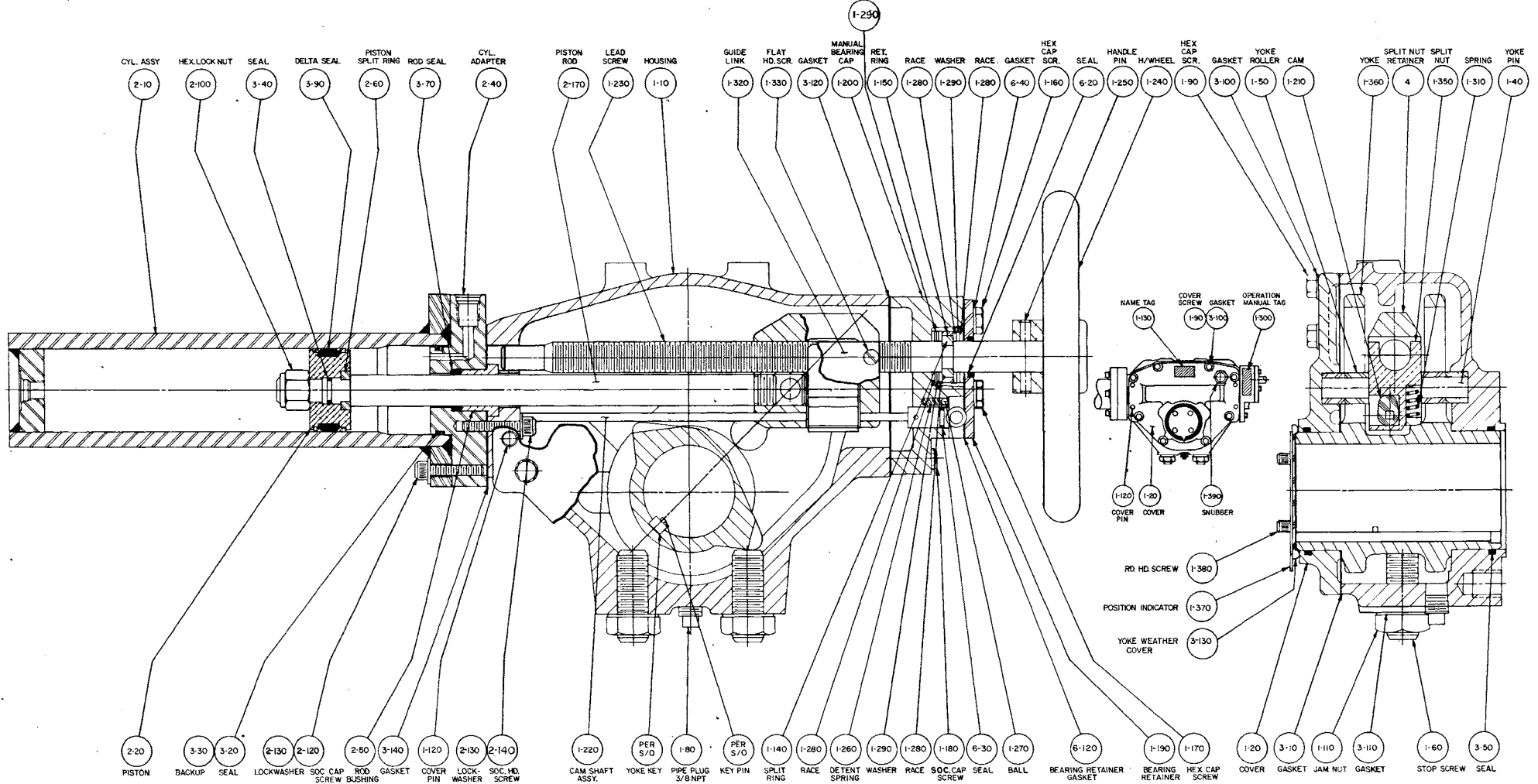
6) SEAL INFORMATION:

A. STANDARD UNITS- STD. NITRILE (AS SHOWN).
 B. PETROLEUM BASE MIL-L-17331: VITON (O-RINGS- PARKER V747-75)
 C. PHOSPHATE ESTER MIL-H-19457 TYPE I - EP(O-RINGS E515-80)

7) HEX HD. O-RING PLUG (2-80) TO BE INSTALLED IN CYL. ASSY. (2-10)

8) HEX HD. O-RING PLUG (2-150) TO BE INSTALLED IN CYL. ASSY (2-10) AND CYL. ADAPTER (2-40).

WASHER



NOT SHOWN:

- (1-100) DRIVE SCREW
- (2-80) HEX HD. O-RING PLUG
- (2-150) HEX HD. O-RINGS PLUG
- (3-150) GREASE

THIS IS A DRAWING OF A PRODUCT OF THE COMPANY AND IS THE PROPERTY OF THE COMPANY. IT IS TO BE USED FOR THE PURPOSES FOR WHICH IT WAS DESIGNED AND IS NOT TO BE REPRODUCED OR TRANSMITTED IN ANY FORM OR BY ANY MEANS, ELECTRONIC OR MECHANICAL, INCLUDING PHOTOCOPYING, RECORDING, OR BY ANY INFORMATION STORAGE AND RETRIEVAL SYSTEM, WITHOUT THE WRITTEN PERMISSION OF THE COMPANY. THE COMPANY MAKES NO WARRANTY, EXPRESS OR IMPLIED, AS TO THE ACCURACY, COMPLETENESS, OR SUITABILITY OF THE INFORMATION CONTAINED HEREIN FOR ANY PARTICULAR PURPOSE. THE USER SHALL BE RESPONSIBLE FOR OBTAINING NECESSARY PERMISSIONS FROM THE APPLICABLE AUTHORITIES FOR ANY SUCH REPRODUCTION OR TRANSMISSION. THE COMPANY SHALL NOT BE LIABLE FOR ANY DAMAGES, INCLUDING CONSEQUENTIAL DAMAGES, ARISING OUT OF OR FROM THE USE OF THIS INFORMATION, EVEN IF ADVISED OF THE POSSIBILITY OF SUCH DAMAGES. THE COMPANY SHALL NOT BE LIABLE FOR ANY DAMAGES, INCLUDING CONSEQUENTIAL DAMAGES, ARISING OUT OF OR FROM THE USE OF THIS INFORMATION, EVEN IF ADVISED OF THE POSSIBILITY OF SUCH DAMAGES.

| MATERIAL | WT |
|--------------------|---------------|
| GENERAL TOLERANCES | |
| FRACTIONAL | MM |
| DECIMAL DIMENSIONS | ± .005 |
| ANGULAR DIMENSIONS | ± .01 |
| SURFACE FINISH | 72 RMS 3.2 |
| THREADS | PER ANSI B1.1 |
| SPRINGS | PER ASTM A229 |
| WELDING | PER AWS D1.1 |
| PLATE | PER ASTM A36 |
| PIPE | PER ASTM A106 |

1983

ASSY. DRAWING T201.5-M ACT'S.

DATE: 5/30/82

BY: [Signature]

CHECKED: [Signature]

APPROVED: [Signature]

SCALE: NONE

QUANTITY: D-60000

REV: C