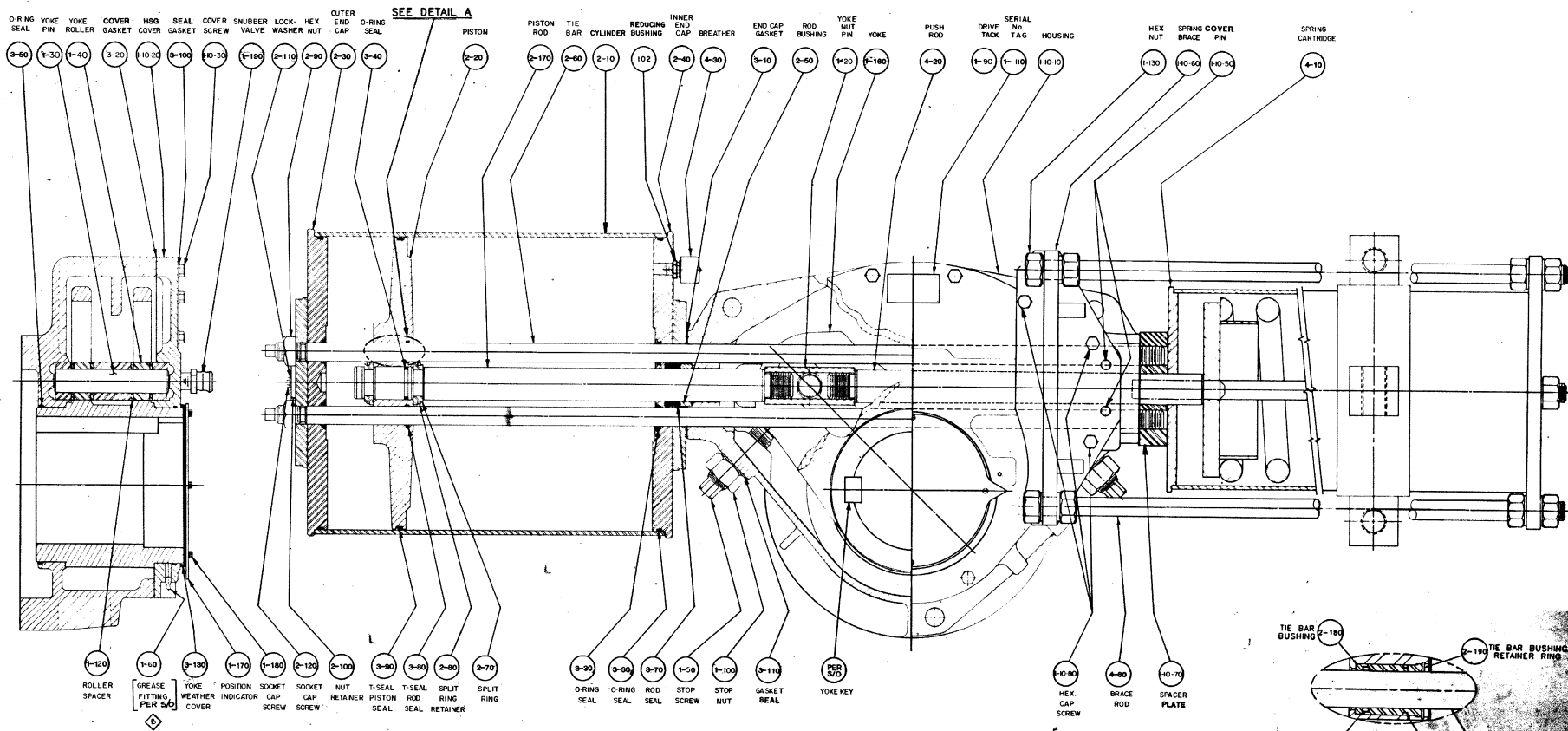


REVISION		
WH	ECO	DATE
A	BZT	1-7-85
B	BGB	1-27-84
C	B799	4-86
D	14702	12-94

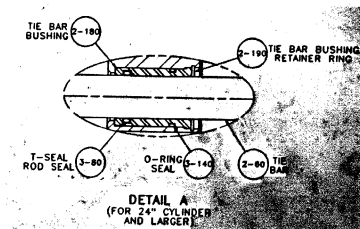


NOTES:

- 1) SERIAL NUMBER TAG (1-10) TO BE PLACED ON TOP OF HOUSING.
- 2) ALL PARTS SHOULD BE INSPECTED AND CAREFULLY CLEANED TO REMOVE ALL DIRT AND OTHER FOREIGN MATTER.
- 3) APPLY GREASE (5-150) LIBERALLY TO ALL COMPONENTS BEFORE ASSEMBLY.
- 4) INSPECT PER ES-6.

NOT SHOWN:

- (1-70) PIPE PLUG (4-50) LOCKWASHER (1-80) HEX HD. SCREW
- (1-40) COVER PIN (4-60) SOC. HD. CAP SCREW
- (3-60) GREASE (1-10-30) FERRY HD. SCREW
- (4-40) NUT RETAINER (1-10-30) SOC. HD. SCREW



<p>* THIS DRAWING CONTAINS CONFIDENTIAL AND PROPRIETARY INFORMATION OF GIBBETTIS AND IS SUBMITTED TO YOU FOR THE LIMITED PURPOSE OF PROVIDING YOU INFORMATION TO FACILITATE YOUR USE AND/OR MAINTENANCE OF PRODUCTS PURCHASED BY YOU FROM GIBBETTIS. BY RECEIVING THIS DOCUMENT YOU AGREE NOT TO USE SUCH CONFIDENTIAL INFORMATION FOR ANY PURPOSE OTHER THAN THE LIMITED PURPOSE STATED HEREIN AND FURTHER AGREE NOT TO DISCLOSE SUCH INFORMATION TO OTHERS EXCEPT IN ACCORDANCE WITH THE LIMITED PURPOSE STATED HEREIN. *</p>	<p>MATERIAL PER EDMA- FINISH PER ES APPROX. WEIGHT- LBS. MARK WITH PART NO. & LATEST REVISION</p>	<p>GENERAL TOLERANCES UNLESS OTHERWISE SPECIFIED DECIMAL: IN MM .3 2.00 2.54 .5 2.00 2.76 .500 2.00 2.30 ANGULAR: ± .5° CONCENTRICITY: .005 .157 T.I.C. T.I.C. FILETS: .031R .754R</p>	<p>DWN J.R.S. 1-3-85 CHM J.R.S. 1-7-15 APPD J.R.S. 1-7-15 APPD J.R.S. 1-7-15</p>	<p>TITLE: ASSEMBLY DWG NTBXX-SRCCW ACTUATOR</p>	<p>GIBBETTIS A Gates-Union-Tyco Company</p>
	<p>DO NOT SCALE DWG. SCALE NONE DWG SIZE D</p>	<p>SHEET 1 OF 1 REV</p>			
	<p>PART NO. 863671-D</p>	<p>SHEET 1 OF 1 REV</p>			
	<p>SCALE NONE DWG SIZE D</p>	<p>SCALE NONE DWG SIZE D</p>			