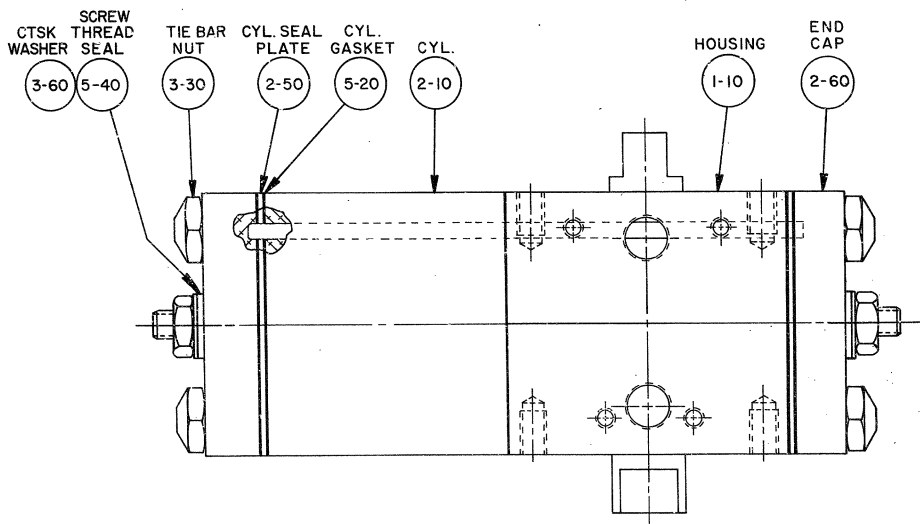
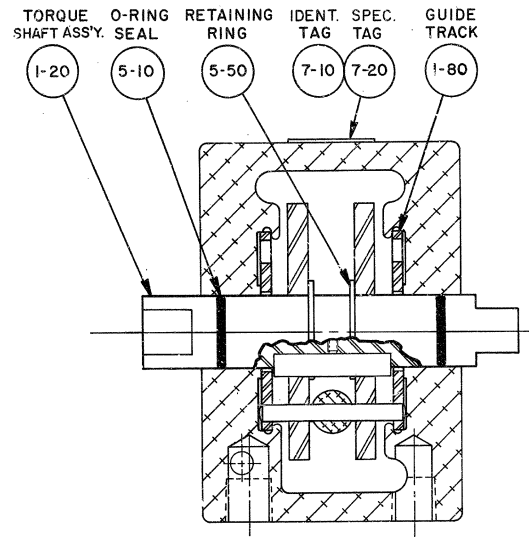
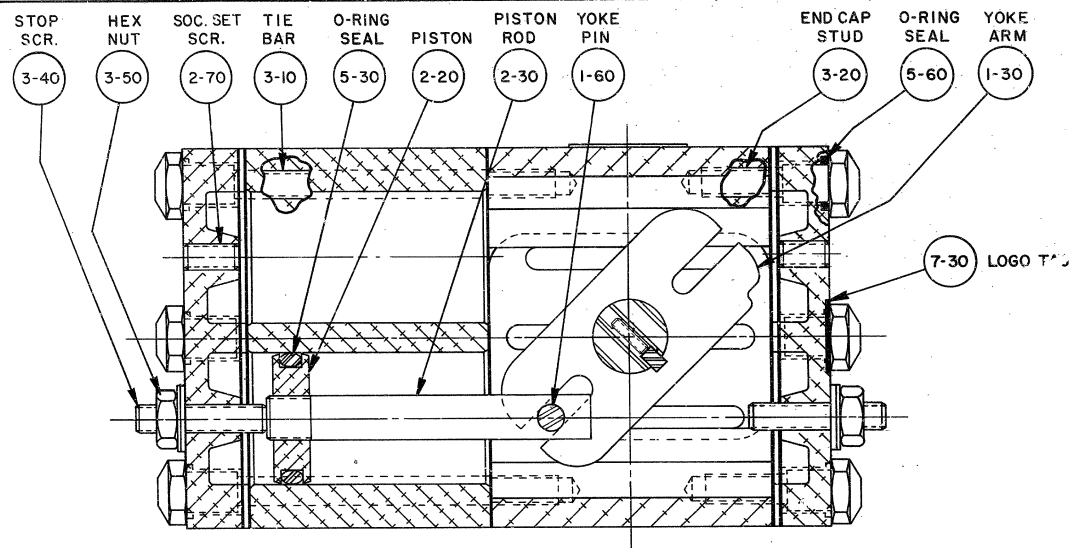


REVISIONS		
LTN	ECN	DATE
A	0025	4-2-89
B	0132	7-25-84
C	0039	4-24-85



NOTES:

- 1.) ALL PARTS SHOULD BE INSPECTED AND CAREFULLY CLEANED TO REMOVE ALL DIRT AND FOREIGN MATTER.
- 2.) APPLY GREASE PER ESL-5 (5-80) LIBERALLY TO ALL COMPONENTS BEFORE ASSEMBLY.
- 3.) INSPECT PER ES - 6.
- 4.) SOCKET SET SCREW IS ASSEMBLED AS PART OF TORQUE SHAFT ASSY (1-20).
 ◆ INSTALL USING LOCTITE 271.
- 5.) SOC. SET SCR'S (2-70) ARE ASSEMBLED USING RECTOR SEAL PER ESMA 4601.

<small>* THIS DRAWING CONTAINS CONFIDENTIAL AND PROPRIETARY INFORMATION OF BETHETTS AND IS SUBMITTED TO YOU FOR THE LIMITED PURPOSE OF PROVIDING YOU INFORMATION TO FACILITATE YOUR USE AND/OR MAINTENANCE OF PRODUCTS PURCHASED BY YOU FROM BETHETTS. BY RECEIVING THIS DOCUMENT, YOU AGREE NOT TO USE SUCH CONFIDENTIAL INFORMATION FOR ANY PURPOSE OTHER THAN THE LIMITED PURPOSE STATED HEREIN AND FURTHER AGREE NOT TO DISCLOSE SUCH INFORMATION TO OTHERS EXCEPT IN ACCORDANCE WITH THE LIMITED PURPOSE STATED HEREIN. *</small>	DWN D. ROSS CHK <i>Removal 4-10-84</i> APP'D <i>J. P. [Signature]</i> 8-2-84 APP'D	DATE 3-29-89 TITLE: ASSEMBLY DRWG. GT110/450/1350 ACTUATOR	
	PART No. D 66298 C		
	DO NOT SCALE DWG. SCALE NONE DWG SIZE D		
	SHEET 1 OF 1 REV		