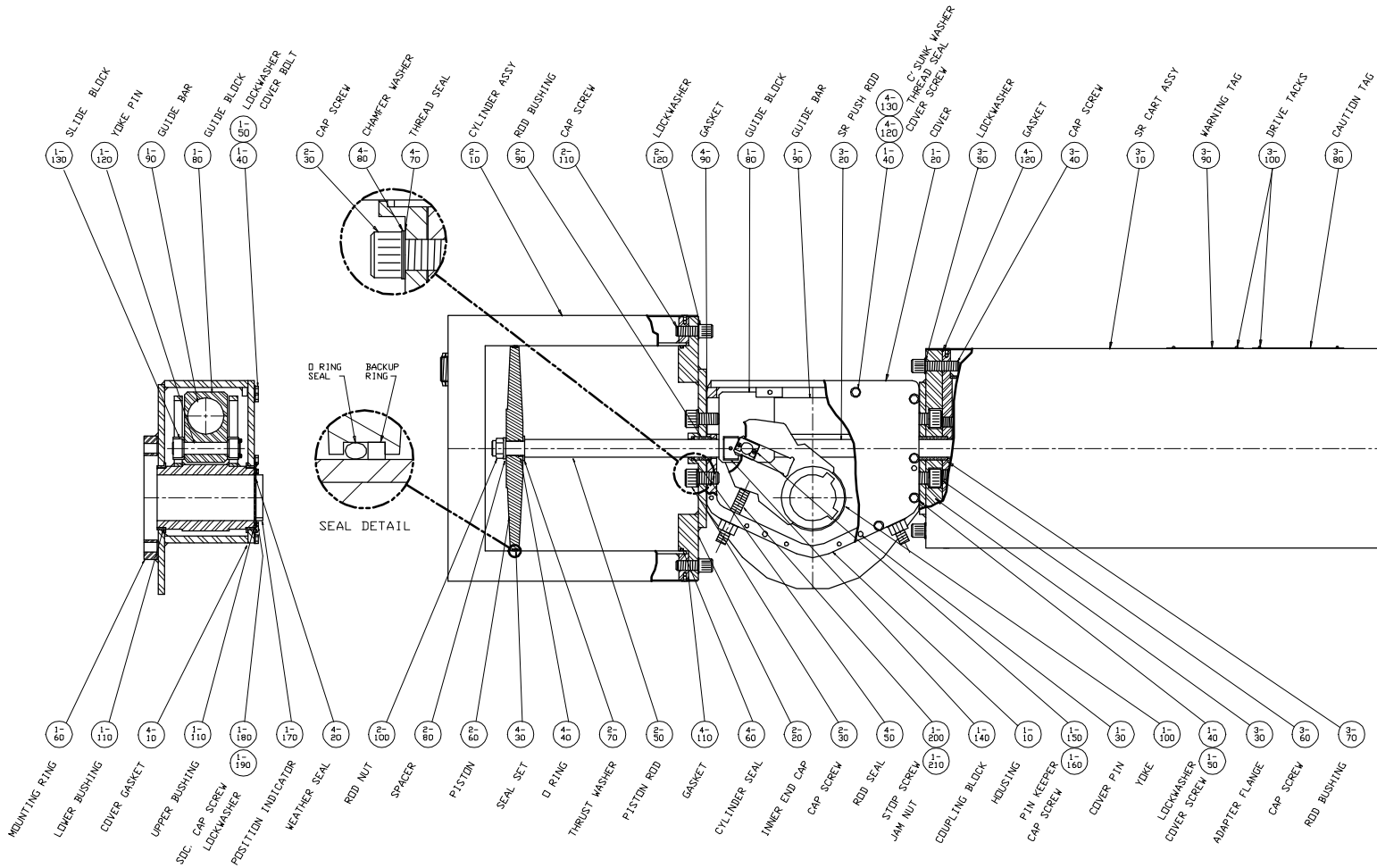


REVISIONS		
LTR	ECN	DATE
B	10502	3/90



NOTES:

- 1) ALL PARTS SHOULD BE INSPECTED AND CLEANED TO REMOVE ALL DIRT AND FOREIGN MATTER.
- 2) APPLY GREASE ESL-5 SPARINGLY TO ID OF CYLINDER 2-10, YOKE SLOTS 1-100, GUIDE BAR 1-80, YOKE PIN 1-120, SR PUSH ROD 3-140, AND YOKE TRUNNIONS.
- 3) INSPECT PER ES-6
- 4) ITEMS NOT SHOWN OR CALLED OUT:
 GREASE (ESL-5) 1-250
 GUIDE BOLT BUSHINGS 3-130-40
 COVER VENT ASSY 1-840
 CYL. BREATHER ASSY 2-190
 SERIAL NUMBER TAG 1-230

UNLESS OTHERWISE SPECIFIED			DRAWN BY:	RAF	DATE	7/86	TITLE:
GENERAL NOTES 1. DIMENSIONS ARE IN INCHES 2. REMOVE BURRS AND BREAK SHARP EDGES 3. CHAMFER ANGLES: 35° 4. SURFACE FINISH: 125 RMS 5. FILLETS .031R±.015 TOL. 6. DO NOT SCALE DRAWING			CHECKED BY: JDJ APPROVED BY: ALL		DATE: 7/86 7/86		ASSEMBLY DRWG. FSX-SRXX SERIES FIRESAFE ACTUATORS (FAIL CCW)
			FINISH PER ESC: NA		TOLERANCES DECIMAL: IN MM X ±.015 ±.254 XX ±.010 ±.254 XXX ±.005 ±.127 ANGULAR ±1° D .005 TIR .127 TIR		
MATERIAL PER ESM: NA			DIMENSIONS ARE COATING APPROX. WEIGHT NA LBS		IF APPLICABLE, MARK (X) WITH PART NUMBER AND LATEST REVISION.		PART NO. 067599
SALES ORDER:			THIRD ANGLE PROJECTION		SCALE 1/4 D B DWG. SIZE 1 OF 1 SHEET 1 OF 1 REV.		BETTIS Actuators & Controls

8

7

6

5

4

3

2

1

D

C

B

A