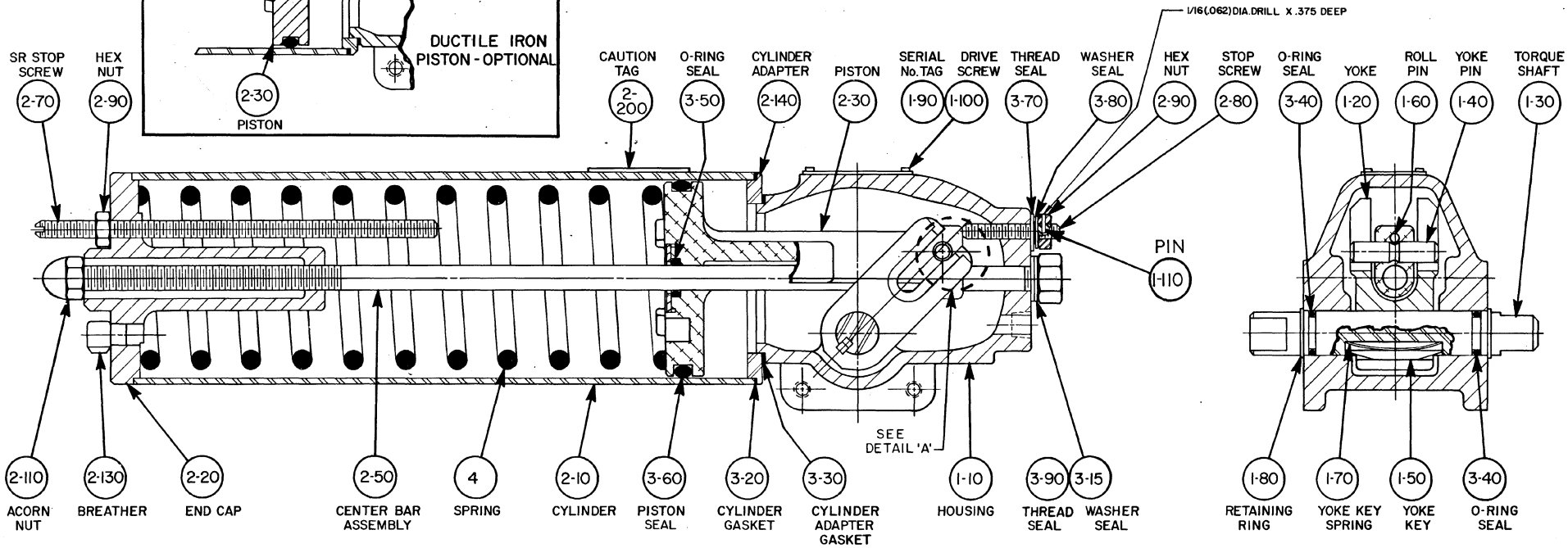
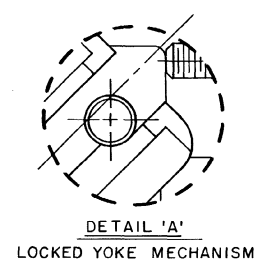


REVISIONS		
LTR	ECN	DATE
A	8673	3-12-86
B	9897	10/88



NOTES:

- 1.) ALL PARTS SHOULD BE INSPECTED AND CAREFULLY CLEANED TO REMOVE ALL DIRT AND OTHER FOREIGN MATTER.
- 2.) APPLY GREASE (5) LIBERALLY TO ALL COMPONENTS BEFORE ASSEMBLY.
- 3.) INSPECT PER ES-6.
- 4.) BASE I DIMENSIONAL DRAWING: C41875.
- 5.) "ADHESIVE-BACKED" CAUTION TAG (2-200) TO BE PLACED ON CYLINDER, PARALLEL TO SERIAL No. TAG.
- 6.) STOP SCREW (2-80) AND HEX NUT (2-90) ARE PINNED TOGETHER DURING ASSEMBLY TO PREVENT FIELD ADJUSTMENT. THIS IS NECESSARY TO INSURE PROPER FUNCTION OF THE LOCKED YOKE MECHANISM.



<small>* THIS DRAWING CONTAINS CONFIDENTIAL AND PROPRIETARY INFORMATION OF GILBERTS AND IS SUBMITTED TO YOU FOR THE LIMITED PURPOSE OF PROVIDING YOU INFORMATION TO FACILITATE YOUR USE AND/OR MAINTENANCE OF PRODUCTS PURCHASED BY YOU FROM GILBERTS. BY RECEIVING THIS DOCUMENT, YOU AGREE NOT TO USE SUCH CONFIDENTIAL INFORMATION FOR ANY PURPOSE OTHER THAN THE LIMITED PURPOSE SPECIFIED HEREIN AND FURTHER AGREE NOT TO DISCLOSE SUCH INFORMATION TO OTHERS EXCEPT AS ACCORDANCE WITH THE LIMITED PURPOSE STATED HEREIN.</small>	<small>DWN JIM JONES</small> <small>CHK D. SHUTT</small> <small>APPD</small>	<small>DATE</small> <small>3-2-86</small> <small>3-12-86</small> <small>3-12-86</small>	<small>TITLE:</small> ASSEMBLY DRWG. CB415/520/725-SR SPRING RETURN LOCKED YOKE MECHANISM	 <small>A Gilbert-Houston Company</small>	<small>PART No</small> 65885	<small>B</small>
	<small>DO NOT SCALE DWG.</small>	<small>S.O. No.</small> <small>SCALE NONE</small>	<small>L.O. No.</small> <small>DWG SIZE D</small>		<small>SHEET</small> 1 <small>OF</small> 1	<small>REV</small>

D-65885