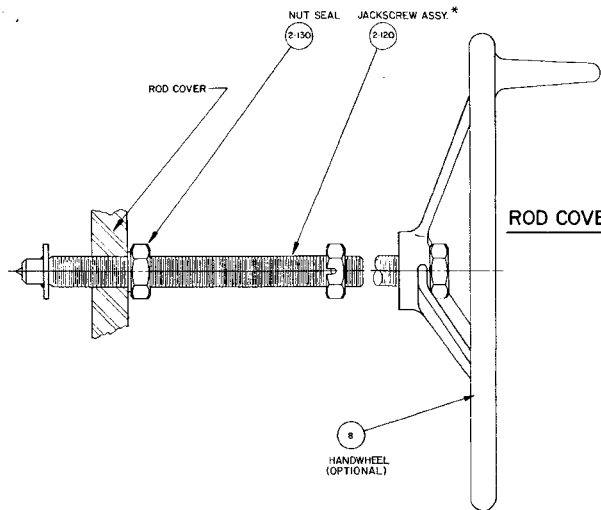
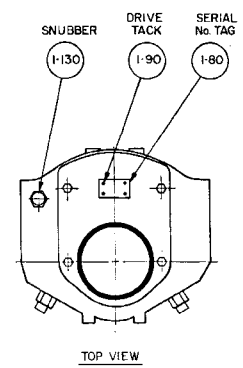


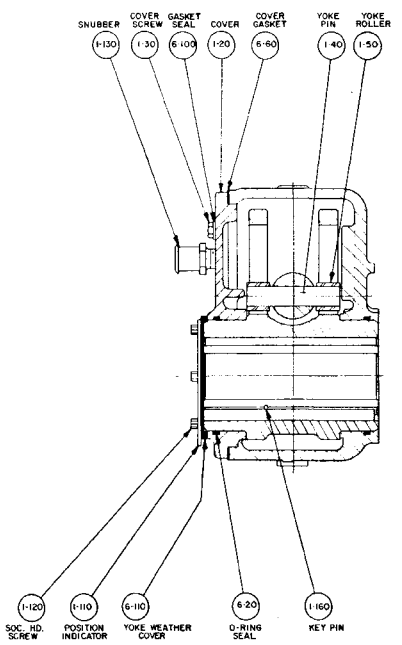
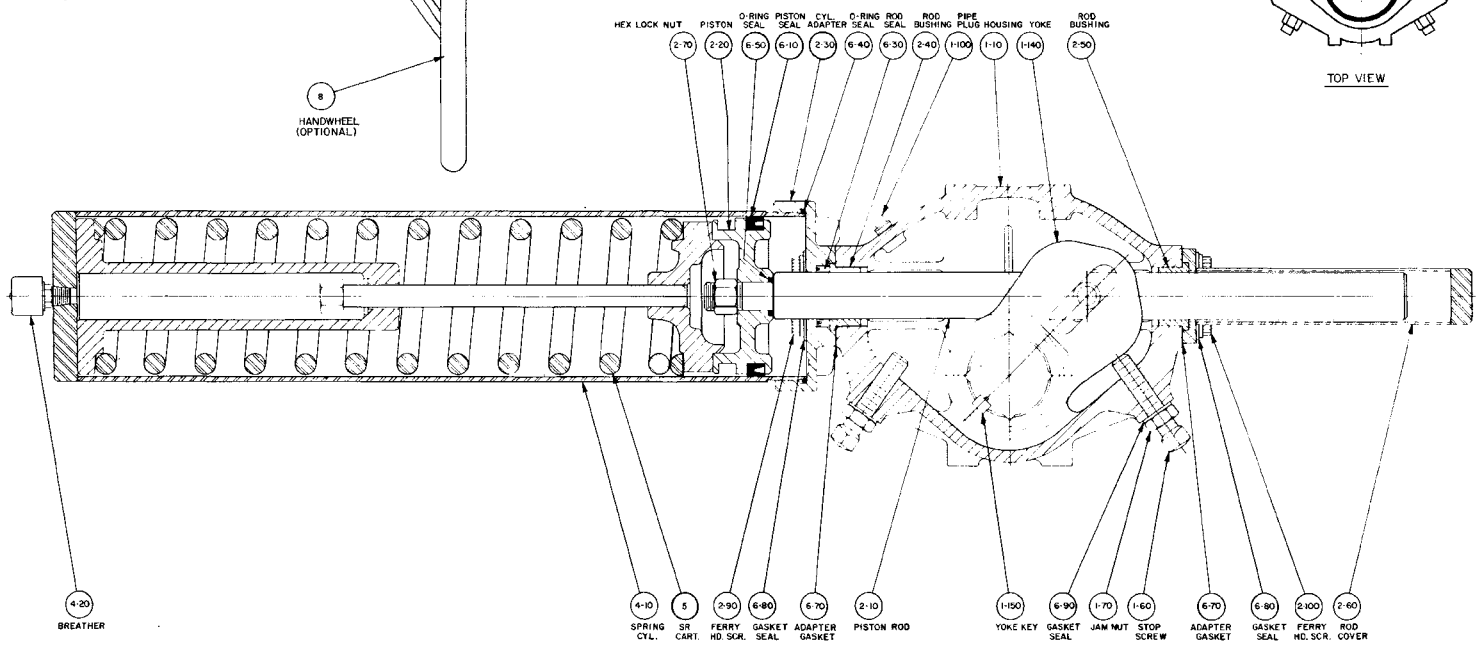
REVISIONS		
REV	ECO	DATE
A	8724	2-27-86
B	9037	12-15-86
C	10415	12-19-90



ROD COVER M3 OPTION



TOP VIEW



- NOTES:
- 1.) SERIAL NUMBER TAG (1-80) TO BE PLACED ON TOP OF COVER—SEE 'TOP VIEW'.
 - 2.) ALL PARTS SHOULD BE INSPECTED AND CAREFULLY CLEANED TO REMOVE ALL DIRT AND OTHER FOREIGN MATTER.
 - 3.) APPLY GREASE (6-150) LIBERALLY TO ALL COMPONENTS BEFORE ASSEMBLY.
 - 4.) INSPECT PER ES-6.

- NOT SHOWN:
- (2-110) PIPE PLUG
 - (6-150) GREASE
 - (8) BLEED VALVE
 - (2-180) PIPE PLUG

"THIS DRAWING CONTAINS CONFIDENTIAL AND PROPRIETARY INFORMATION OF OH-BETTIS AND IS SUBMITTED TO YOU FOR THE LIMITED PURPOSE OF PROVIDING YOU INFORMATION TO FACILITATE YOUR USE AND/OR MAINTENANCE OF PRODUCTS PURCHASED BY YOU FROM OH-BETTIS. BY RECEIVING THIS DOCUMENT, YOU AGREE NOT TO USE SUCH CONFIDENTIAL INFORMATION FOR ANY PURPOSE OTHER THAN THE LIMITED PURPOSE STATED HEREIN AND FURTHER AGREE NOT TO DISCLOSE SUCH INFORMATION TO OTHERS EXCEPT IN ACCORDANCE WITH THE LIMITED PURPOSE STATED HEREIN."

MATL	WT	TITLE
GENERAL TOLERANCES		ASSEMBLY DRWG. 50/721-SR(CW) 501/721 -SR(CW) M3 WITH BLEED PLUG
FRACTIONAL	±.005	
DECIMAL DIMENSIONS	±.002	
DIAMETER DIMENSIONS	±.002	
UNLESS OTHERWISE SPECIFIED	±.002	
ALL DIMENSIONS	UNLESS OTHERWISE SPECIFIED	DATE: 12/15/86 DRAWN BY: JIM JONES CHECKED BY: JIM JONES TITLE: NONE D-65670 C

D-65670